

Lion Beer, Spirits & Wine Pty Ltd
L 7 68 York St
Sydney NSW 2000

Project 71021.21
28 May 2025
R.001.Rev0
KDP:jl

Attention: Jason Lee
Email: jason.lee@lionco.com

Report on Groundwater Monitoring May 2025 Tooheys, 29 Nyrang Street, Lidcombe NSW

1. Introduction

This letter report by Douglas Partners Pty Ltd (Douglas) provides the laboratory results and a brief discussion of the May 2025 round of Groundwater Monitoring at the Tooheys Brewery Site at 29 Nyrang Street, Lidcombe. The groundwater monitoring was undertaken in accordance with Douglas proposal 71021.21.P.001 dated 5 May 2025.

The objectives of the groundwater monitoring programme are to assess whether any groundwater contamination identified on-site in 2006 is migrating off-site and to address the conditions of approval for groundwater monitoring set by the NSW Department of Planning as part of the approval for the upgrade and continued operation of the site under Part 3A of the Environmental Planning and Assessment Act 1979. It is understood that no further rounds of monitoring were required as of 2014. However, Tooheys has requested continued monitoring until such time as their licencing conditions are changed. The ongoing monitoring frequency is therefore biannual with rounds completed in May and November of each year, as instructed by the client.

As stated in Douglas' report First Round of 2011 Groundwater Monitoring, Tooheys Brewery – 29 Nyrang Street, Lidcombe, 7 June 2011, ref: 71021.03, a Phase 1 contamination assessment was conducted by Douglas in 2006. The results of the soil sampling and analysis conducted by Douglas in November and December 2006 indicated elevated total recoverable hydrocarbon (TRH) concentrations in samples collected from boreholes adjacent to the fuel underground storage tanks (USTs) for the former boiler (the former boiler USTs). Elevated TRH and toluene concentrations were detected in groundwater samples collected from the well adjacent to the former boiler USTs (BH6C). Elevated concentrations of TRH were also detected in the groundwater samples collected from the well adjacent to the refuelling USTs (BH1).

Four additional groundwater wells were installed at the boundary of the site in order to determine whether the identified contamination was migrating off-site (Douglas report on Field Investigation Phase 1 Contamination Assessment, 29 Nyrang Street, Lidcombe, March 2007, ref: 44359). Further rounds of groundwater monitoring have been undertaken by Douglas as listed in Section 8.

2. Site information

The brewery is located at 29 Nyrang Street, Lidcombe, within the Local Government Area of Cumberland City Council and comprises a roughly rectangular area of approximately 6.2 hectares (ha). The site is contained within Lot 110, DP 1141813. It is Zoned 4(a) Industrial Enterprise and is surrounded by industrial sites to the north, west and south and a residential area to the east.

Haslams Creek is located to the immediate west of the site and flows in approximately a northerly direction. To the north of the site the creek bends to the east and flows to the northeast and discharges into Homebush Bay located approximately 3.5 km downstream from the brewery. The portion of Haslams Creek adjacent to the brewery is a concrete lined stormwater channel.

The site is used for the production and storage of Tooheys' beer, which is transported and distributed by trucks to various outlets. The majority of the site is occupied by large warehouse structures and large fermentation, maturation and storage tanks / silos. A site drawing and borehole location plan are presented in Drawing 1, attached.

Six decommissioned USTs were located along the northern boundary of the utility building. The USTs are reported to have been emptied in the late 1990s when the boilers were converted to natural gas. It was reported by ARUP that in September 2008, Tooheys decommissioned the six former boiler USTs *in situ*, which involved removal of the residual water / fuel mix inside the tanks and foam filling.

A further three USTs were located on the north-eastern boundary of the site which were formerly used for the storage of petrol or diesel for on-site vehicle refuelling. A concrete plinth and awning structure indicated that a bowser was also formerly located nearby. Monitoring Wells BH1 and BH2 are located to the east and west of the UST and petrol bowser respectively. It was reported that the former refuelling USTs were decommissioned in situ by being sand filled and capped in the 1990s.

Douglas prepared a remediation action plan (RAP) for the removal and validation of the above three USTs on the north-east boundary. The RAP was entitled Remediation Action Plan, 29 Nyrang Street, Lidcombe, October 2011, ref 71021.02 Revision 2. The subsequent remediation and validation for the underground petroleum storage system (UPSS) in this area was undertaken shortly after the completion of the second round of groundwater monitoring carried out on 21 October 2011. The procedure and results of the remediation and validation of the UPSS at the north-eastern boundary area were reported in, UPSS Validation Assessment, Tooheys Brewery, 29 Nyrang Street, Lidcombe, project reference 71021.04, dated February 2012. The successful validation was subject to a Site Audit undertaken by ENVIRON Australia Pty Ltd.

3. Groundwater default guideline values

Groundwater default guideline values (DGV) have been sourced from the ANZG Australian and New Zealand Guidelines for Fresh and Marine Water Quality (2018) default guideline values for toxicants in fresh waters for the protection of 95% of species. It is noted that the groundwater investigation levels (GIL) for groundwater monitoring rounds prior to the August 2018 were sourced from the ANZECC Australian and New Zealand Guidelines for Fresh and Marine Water Quality (2000), trigger values for toxicants in fresh waters for the protection of 95% of species.

It is also noted that as of 29 August 2018, the Australian and New Zealand Guidelines for Fresh and Marine Water Quality (ANZG, 2018) revoked the documents listed below:

- The Australian Water Quality Guidelines for Fresh and Marine Waters (ANZECC, November 1992); and
- The Australian and New Zealand Guidelines for Fresh and Marine Water Quality (ANZECC and ARMCANZ, October 2000).

Previously, in the absence of ANZECC (2000) criteria for TRH, the laboratory limits of reporting were adopted as the screening criteria as nominated for the auditor-approved RAP. In order to be consistent with the adopted modified values and with the EPL, the laboratory limits of reporting for TRH have continued to be used as screening levels. Furthermore, the purpose of the assessment is to assess the potential off-site migration of contaminants associated with the fuel tanks, not to assess potential vapour intrusion risks within the site. It is noted also that the DGV values for TRH are more stringent than those adopted in earlier groundwater monitoring rounds (pre-November 2011). Therefore, the laboratory limits of reporting are considered to be suitable as initial screening levels for TRH.

Table 1: Groundwater default guideline values (DGV) and rationale

Contaminant	Adopted criteria (µg/L)	Contaminant
Metals		ANZG (2018) Australian and New Zealand Guidelines for Fresh and Marine Water Quality for the protection of 95% of freshwater species. The threshold levels have been adjusted for extremely hard water (500 mg CaCO ₃ /L) in accordance with the guidelines which uses the algorithm available in ANZECC (2000).
Arsenic (V)	13.0	
Cadmium	2.4* (0.2)	
Chromium (III)	33.1* (3.3)	
Copper	1.4	
Lead	121.1* (3.4)	
Mercury	0.6	
Nickel	120.2* (11)	
Zinc	87.4 (8)	
TRH		Screening DGV (at limit of reporting) - require further considerations if exceeded.
C6 – C9	10	
>C9	250	
>C10 – C16	50	

Contaminant	Adopted criteria (µg/L)	Contaminant
BTEX		ANZG (2018) Australian Water Quality Guidelines for the protection of 95% of freshwater species.
Benzene	950	
Toluene	180	Reliability of DGV for toluene and ethylbenzene is unknown.
Ethylbenzene	80	
Xylene	625	DGV for xylene is the sum of m-xylene, o-xylene and p-xylene default guideline values.

* Hardness modified trigger value (default trigger level)

4. Groundwater monitoring methodology and field observations

4.1 Identification of wells

The locations of the six existing wells labelled BH1, BH2, BH7, BH8, BH9 and BH10 (identified as with the GW prefix on the Drawing 1) along the western and northern boundaries of the site are presented in Drawing 1, attached.

4.2 Frequency of sampling

The groundwater monitoring wells BH1, BH2, BH7, BH8, BH9 and BH10 are monitored on a bi-annual basis in May and November each year, until such time as the requirement for monitoring is terminated, in accordance with the environmental protection licence (EPL) pursuant to the site.

4.3 Well development

Prior to collecting groundwater samples, each well was fully developed on 14 May 2025 using a submersible 12V pump in order to remove stagnant water and to provide good hydraulic connectivity to the local groundwater system. The exception was monitoring well BH7 that was developed with a peristaltic pump as the submersible 12V pump was unable to be lowered beyond a bend in the pipe.

Well development was achieved by the removal of a minimum of three well volumes of water or until the well was dry, whichever was the lesser. Monitoring wells BH7, BH9 and BH10 became dry during development. All wells were left to equilibrate prior to sampling.

4.4 Collection of groundwater samples

The collection of groundwater samples from each of the six monitoring wells was carried out in accordance with the methodology as set out in the Douglas Field Procedures Manual. Groundwater sampling was undertaken on 6 May 2025 by a Douglas Environmental Engineer using a low flow peristaltic pump. Samples were taken from near the middle of the screened section, being close to the middle of the water column. The sampling programme included 10% field replicates for QA / QC purposes. The replicate sample was identified as BD1/20250516 was

also collected on 16 May 2025 from BH8. A trip spike and blank were also taken to site and a rinsate sample collected.

The samples were collected after stable field readings were obtained for pH, conductivity, temperature and dissolved oxygen. Samples were carefully pumped into laboratory prepared sample containers including hydrochloric acid preserved BTEX vials. The groundwater samples collected for heavy metal testing were filtered in the field using a 45 µm filter. Completed field sheets are attached to this report.

No phase separated hydrocarbons (PSH) were noted in the groundwater collected from any of the wells sampled in this monitoring round.

Sample containers were labelled and stored in the field and transported in an esky cooled with ice and later stored in a fridge at the office or laboratory. The samples were delivered to a NATA accredited laboratory, Envirolab Services (ELS), together with chain-of-custody records.

Due to limited sample returns from BH10 TRH analysis was conducted from a HCL preserved (BTEX) vial. Therefore, the result from BH10 for TRH may not be reliable.

4.5 Quality assurance and quality control (QA / QC)

QA / QC sampling and analysis included the analysis of one replicate sample and one trip blank and trip spike and rinsate sample.

An intra-laboratory replicate analysis was conducted as a check of the reproducibility of results and as a measure of consistency of sampling techniques.

The comparative results of analysis between original and intra-laboratory replicate sample are summarised in Table 2.

Table 2: RPD results - intra-laboratory results (µg/L)

Analyte	BH8	BD1/20250516	Difference	RPD (%)
As	<1	<1	0	0
Cd	0.4	0.6	0.2	40
Cr	<1	<1	0	0
Cu	<1	<1	0	0
Pb	<1	<1	0	0
Hg	<0.05	<0.05	0	0
Ni	6	6	0	0
Zn	20	22	2	10
C6-C9	<10	<10	0	0
C10-C36	<50	<50	0	0
>C10-C16	<50	<50	0	0

Analyte	BH8	BD1/20250516	Difference	RPD (%)
Benzene	<1	<1	0	0
Toluene	<1	<1	0	0
Ethyl-Benzene	<1	<1	0	0
Total Xylene	<3	<3	0	0

The calculated RPDs were all within the acceptable range of +/- 30 for inorganic analytes and +/- 50% for organics with the exception of cadmium. However, the exceedance was not considered significant due to the low actual difference in concentration and as both primary and replicate sample were within the adopted assessment criteria. Therefore, the intra-laboratory replicate comparison indicates that the sampling technique was generally consistent and repeatable, and the laboratory sampling handling and analytical methods are comparable.

A trip spike and trip blank were also analysed. The trip spike recovery for BTEX was between 86% and 90% and the trip blank results for BTEX were below the laboratory level of reporting indicating that appropriate transport and handling techniques were adopted.

A rinsate sample was collected and analysed for metals, TRH and BTEX. The concentrations of the analytes in the rinsate sample were below the laboratory detection limits indicating that adequate decontamination techniques had been employed.

4.6 Laboratory results

The groundwater samples (including QA / QC samples) were sent for the following analysis at a NATA accredited laboratory:

- Heavy metals (arsenic, cadmium, chromium, copper, lead, mercury, nickel and zinc); and
- TRH and BTEX.

Table 3 shows the analytical scheme for the groundwater samples.

Table 3: Analytical scheme for groundwater samples

Sample ID	Heavy Metals	TRH	BTEX
BH1, 2, 7, 8, 9, 10	X	X	X
BD1/20250516*	X	X	X
Trip Spike			X
Trip Blank			X
Rinsate	X	X	X

* Blind duplicate sample of BH8

5. Results

5.1 Field results

Piezometric levels were measured prior to development and prior to sampling from the groundwater wells. The measured levels are summarised in Table 4. It is noted that groundwater levels are transient and change over time due to climatic, anthropogenic and other influences.

Table 4: Piezometric levels

Monitoring Well	m AHD (surface)	Date			
		14.05.2025 (development)		16.05.2025 (sampling)	
		m bgl	m AHD	m bgl	m AHD
1	6.46	2.31	4.15	2.26	4.2
2	6.25	2.82	3.43	2.46	3.79
7	6.38	2.85	3.53	3.57	2.81
8	6.50	4.1	2.4	4.32	2.18
9	6.00	4.05	1.95	3.93	2.07
10	5.12	1.2	3.92	2.89	2.23

The water level appeared to have recovered to the equilibrium level or close to the equilibrium level after development in each of the wells.

Groundwater samples were noted to be mostly clear or slightly turbid. Samples were taken after stable readings were obtained for temperature, dissolved oxygen, conductivity, pH, and reduction potential as presented in Table 5.

Table 5: Groundwater reading upon stabilisation

Monitoring Well	Temperature (°C)	Dissolved Oxygen mg/L	Conductivity (µS/cm)	pH	Redox (mV)
1	22.1	0.94	2749	6.01	42.2
2	21.9	0.19	10855	6.19	30.2
7	21.5	0.31	1901	6.34	65.7
8	21.9	1.97	20371	5.83	106.4
9	22.1	1.92	12084	6.08	59.3
10	21.3	4.71	2531	6.25	77.2

5.2 Analytical results

The attached Tables 6 to 26 provide the results of previous groundwater testing for reference purposes. The laboratory results of the current groundwater samples plus the QA / QC results are summarised in the attached Table 27. The laboratory test results certificates and chain-of-custody information for the current round of monitoring are also attached.

6. Discussion

Concentrations of TRH and BTEX were reported below the laboratory limits of reporting for all monitoring wells sampled during this round.

TRH has periodically been detected in BH10 and on two occasions in BH1 during the previous rounds of monitoring. Surface water impacts have been recorded at these locations due to localised minor flooding of the locations where the wells are positioned. Historically the TRH detections at BH10 have not been persistent and have not been indicative of petroleum spills / leaks. Test location BH10 is located at the northern site boundary in a position that is hydraulically upgradient of the potential on-site source/s of petroleum hydrocarbons. The concentration of TRH in the three groundwater wells along Haslams Creek (the down-gradient site boundary, BH7, 8 and 9) were all below the laboratory detection limit (both during the current and previous monitoring rounds) which indicates that there is not a significant risk of off-site migration of petroleum hydrocarbons.

Therefore, at this stage the periodic TRH detections are not considered to be significant and do not warrant further action. However, it may be prudent to decommission and replace BH10 if surface water is intruding into the well.

Concentrations of heavy metals were reported either below their respective laboratory limits of reporting or below the DGV for all monitoring wells sampled during this round of sampling with the exception of copper in sample BH10 (3 µg/L compared to the DGV of 1.4 µg/L. The minor exceedance was not considered to be environmentally significant.

Low levels of heavy metals, in particular copper have periodically been detected in groundwater particularly copper and zinc however no significant trends have been identified. Mann Kendall Trend analysis was undertaken for heavy metals and TRH which confirmed that while some individual metals at some locations may have minor increases (such as zinc at BH7) there is no evidence of significant trend increases in heavy metal or TRH levels in groundwater at the site to date.

Elevated heavy metals within the detected ranges are also typical of diffuse urban pollution and generally cannot be attributed to any specific on or off-site source.

7. Conclusion

Based on the current round of groundwater monitoring at the site, the laboratory results indicate that the groundwater is not significantly impacted by petroleum hydrocarbon or heavy metal contamination at the monitored locations.

8. List of previous reports

The previous groundwater reports are listed below:

- Groundwater Monitoring Report, 29 Nyrang Street, Lidcombe, January 2010, ref: 71021.00;
- Groundwater Monitoring Report, 29 Nyrang Street, Lidcombe, January 2011 ref: 71021.01;
- First Round of Groundwater Monitoring Tooheys Brewery - 29 Nyrang Street, Lidcombe, June 2011 ref: 71021.03;
- Second Round of Groundwater Monitoring Tooheys Brewery - 29 Nyrang Street, Lidcombe, November 2011 ref: 71021.03;
- First Round of Groundwater Monitoring Tooheys Brewery - 29 Nyrang Street, Lidcombe, June 2012 ref: 71021.06;
- Second Round of Groundwater Monitoring Tooheys Brewery - 29 Nyrang Street, Lidcombe, October 2012 ref: 71021.06;
- First Round of Groundwater Monitoring Tooheys Brewery - 29 Nyrang Street, Lidcombe, May 2013 ref: 71021.07;
- Second Round of Groundwater Monitoring Tooheys Brewery - 29 Nyrang Street, Lidcombe, November 2013 ref: 71021.07;
- 2014 Groundwater Monitoring Tooheys Brewery - 29 Nyrang Street, Lidcombe, July 2014 ref: 71021.08;
- 2015 Groundwater Monitoring Tooheys Brewery - 29 Nyrang Street, Lidcombe, December 2015 ref: 71021.10;
- January 2016 Groundwater Monitoring Tooheys Brewery - 29 Nyrang Street, Lidcombe, February 2016 ref: 71021.10;
- January / February 2017 Groundwater Monitoring Tooheys Brewery - 29 Nyrang Street, Lidcombe, 6 March 2017 ref: 71021.11.R.001.Rev0;
- March 2017 Groundwater Monitoring Tooheys Brewery - 29 Nyrang Street, Lidcombe, 13 April 2017 ref: 71021.11.R.002.Rev;
- August 2017 Groundwater Monitoring Tooheys Brewery - 29 Nyrang Street, Lidcombe, 15 September 2017 ref: 71021.12.R001.Rev0;
- November 2017 Groundwater Monitoring, Tooheys Brewery - 29 Nyrang Street, Lidcombe, 1 December 2017 ref: 71021.12.R.002.Rev0;
- August 2018 Groundwater Monitoring Tooheys Brewery - 29 Nyrang Street, Lidcombe, 12 September 2018 ref: 71021.13.R.001.Rev0;
- Groundwater Monitoring - November 2018, 29 Nyrang Street, Lidcombe, 12 December 2018 ref: 71021.13.R.002.Rev0;
- August / September 2019 Groundwater Monitoring Round, 29 Nyrang Street, Lidcombe, 1 November 2019 ref: 71021.14.R.001.Rev0;
- November 2019 Groundwater Monitoring, Tooheys Brewery - 29 Nyrang Street, Lidcombe, 11 December 2019 ref: 71021.14.R.002.Rev0;
- May 2020 Groundwater Monitoring, Tooheys Brewery - 29 Nyrang Street, Lidcombe, 3 June 2020 ref: 71021.15.R.001.Rev0;

- November 2020 Groundwater Monitoring, Tooheys Brewery - 29 Nyrang Street, Lidcombe, November 2020 ref: 71021.15.R.002.Rev0;
- May 2021 Groundwater Monitoring, Tooheys Brewery - 29 Nyrang Street, Lidcombe, May 2021 ref: 71021.16.R.001.Rev0;
- November 2021 Groundwater Monitoring, Tooheys Brewery - 29 Nyrang Street, Lidcombe, November 2021 ref: 71021.16.R.002.Rev0;
- May 2022 Groundwater Monitoring, Tooheys Brewery - 29 Nyrang Street, Lidcombe, November 2021 ref: 71021.18.R.001.Rev0;
- May 2022 Groundwater Monitoring, Tooheys Brewery - 29 Nyrang Street, Lidcombe, November 2021 ref: 71021.18.R.001.Rev0;
- December 2022 Groundwater Monitoring, Tooheys Brewery - 29 Nyrang Street, Lidcombe, February 2022 ref: 71021.18.R.002.Rev0;
- May 2023 Groundwater Monitoring, Tooheys Brewery - 29 Nyrang Street, Lidcombe, June 2023 ref: 71021.19.R.001.Rev0;
- November 2023 Groundwater Monitoring, Tooheys Brewery - 29 Nyrang Street, Lidcombe, December 2023 ref: 71021.19.R.002.Rev0;
- May 2024 Groundwater Monitoring, Tooheys Brewery - 29 Nyrang Street, Lidcombe, June 2024 ref: 71021.20.R.001.Rev0; and
- December 2024 Groundwater Monitoring, Tooheys Brewery - 29 Nyrang Street, Lidcombe, January 2025 ref: 71021.20.R.002.Rev0.

9. Limitations

Douglas Partners Pty Ltd (Douglas) has prepared this report for this project at 29 Nyrang Street, Lidcombe in accordance with Douglas' proposal (71028.21.P.001.Rev0) dated 5 May 2025 and acceptance received from Mr Jason Lee of Lion-Beer, Spirits and Wine Pty Ltd. The work was carried out under Douglas' Engagement Terms. This report is provided for the exclusive use of Lion-Beer, Spirits and Wine Pty Ltd for this project only and for the purposes as described in the report. It should not be used by or relied upon for other projects or purposes on the same or other site or by a third party. Any party so relying upon this report beyond its exclusive use and purpose as stated above, and without the express written consent of Douglas, does so entirely at its own risk and without recourse to Douglas for any loss or damage. In preparing this report Douglas has necessarily relied upon information provided by the client and/or their agents.

The results provided in the report are indicative of the sub-surface conditions on the site only at the specific sampling and/or testing locations, and then only to the depths investigated and at the time the work was carried out. Sub-surface conditions can change abruptly due to variable geological processes and also as a result of human influences. Such changes may occur after Douglas' field testing has been completed.

Douglas' advice is based upon the conditions encountered during this investigation. The accuracy of the advice provided by Douglas in this report may be affected by undetected variations in ground conditions across the site between and beyond the sampling and/or testing locations. The advice may also be limited by budget constraints imposed by others or by site accessibility.

This report must be read in conjunction with all of the attached and should be kept in its entirety without separation of individual pages or sections. Douglas cannot be held responsible for interpretations or conclusions made by others unless they are supported by an expressed statement, interpretation, outcome or conclusion stated in this report.

This report, or sections from this report, should not be used as part of a specification for a project, without review and agreement by Douglas. This is because this report has been written as advice and opinion rather than instructions for construction.

The contents of this report do not constitute formal design components such as are required, by the Health and Safety Legislation and Regulations, to be included in a Safety Report specifying the hazards likely to be encountered during construction and the controls required to mitigate risk. This design process requires risk assessment to be undertaken, with such assessment being dependent upon factors relating to likelihood of occurrence and consequences of damage to property and to life. This, in turn, requires project data and analysis presently beyond the knowledge and project role respectively of Douglas. Douglas may be able, however, to assist the client in carrying out a risk assessment of potential hazards contained in the Comments section of this report, as an extension to the current scope of works, if so requested, and provided that suitable additional information is made available to Douglas. Any such risk assessment would, however, be necessarily restricted to the groundwater components set out in this report and to their application by the project designers to project design, construction, maintenance and demolition.

Yours faithfully

Douglas Partners Pty Ltd



Kurt Plambeck
Senior Associate

Reviewed by



Nerilee Edwards
Principal

Attachments: About this Report
Drawing 1
Field Notes
Results Tables
Laboratory Certificates
Mann-Kendall Trend Analysis

Attachments

About this Report

Introduction

These notes have been provided to amplify DP's report in regard to classification methods, field procedures and the comments section. Not all are necessarily relevant to all reports.

DP's reports are based on information gained from limited subsurface excavations and sampling, supplemented by knowledge of local geology and experience. For this reason, they must be regarded as interpretive rather than factual documents, limited to some extent by the scope of information on which they rely.

Copyright

This report is the property of Douglas Partners Pty Ltd. The report may only be used for the purpose for which it was commissioned and in accordance with the Conditions of Engagement for the commission supplied at the time of proposal. Unauthorised use of this report in any form whatsoever is prohibited.

Borehole and Test Pit Logs

The borehole and test pit logs presented in this report are an engineering and/or geological interpretation of the subsurface conditions, and their reliability will depend to some extent on frequency of sampling and the method of drilling or excavation. Ideally, continuous undisturbed sampling or core drilling will provide the most reliable assessment, but this is not always practicable or possible to justify on economic grounds. In any case the boreholes and test pits represent only a very small sample of the total subsurface profile.

Interpretation of the information and its application to design and construction should therefore take into account the spacing of boreholes or pits, the frequency of sampling, and the possibility of other than 'straight line' variations between the test locations.

Groundwater

Where groundwater levels are measured in boreholes there are several potential problems, namely:

- In low permeability soils groundwater may enter the hole very slowly or perhaps not at all during the time the hole is left open;
- A localised, perched water table may lead to an erroneous indication of the true water table;
- Water table levels will vary from time to time with seasons or recent weather changes. They may not be the same at

the time of construction as are indicated in the report; and

- The use of water or mud as a drilling fluid will mask any groundwater inflow. Water has to be blown out of the hole and drilling mud must first be washed out of the hole if water measurements are to be made.

More reliable measurements can be made by installing standpipes which are read at intervals over several days, or perhaps weeks for low permeability soils. Piezometers, sealed in a particular stratum, may be advisable in low permeability soils or where there may be interference from a perched water table.

Reports

The report has been prepared by qualified personnel, is based on the information obtained from field and laboratory testing, and has been undertaken to current engineering standards of interpretation and analysis. Where the report has been prepared for a specific design proposal, the information and interpretation may not be relevant if the design proposal is changed. If this happens, DP will be pleased to review the report and the sufficiency of the investigation work.

Every care is taken with the report as it relates to interpretation of subsurface conditions, discussion of geotechnical and environmental aspects, and recommendations or suggestions for design and construction. However, DP cannot always anticipate or assume responsibility for:

- Unexpected variations in ground conditions. The potential for this will depend partly on borehole or pit spacing and sampling frequency;
- Changes in policy or interpretations of policy by statutory authorities; or
- The actions of contractors responding to commercial pressures.

If these occur, DP will be pleased to assist with investigations or advice to resolve the matter.

continued next page

About this Report

Site Anomalies

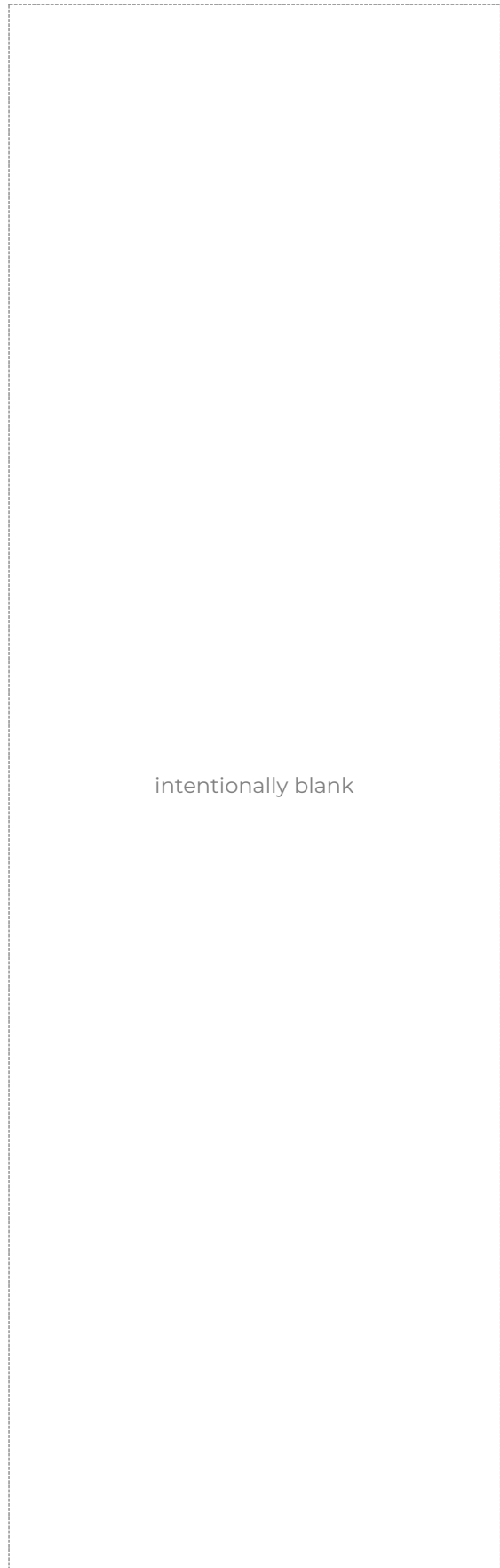
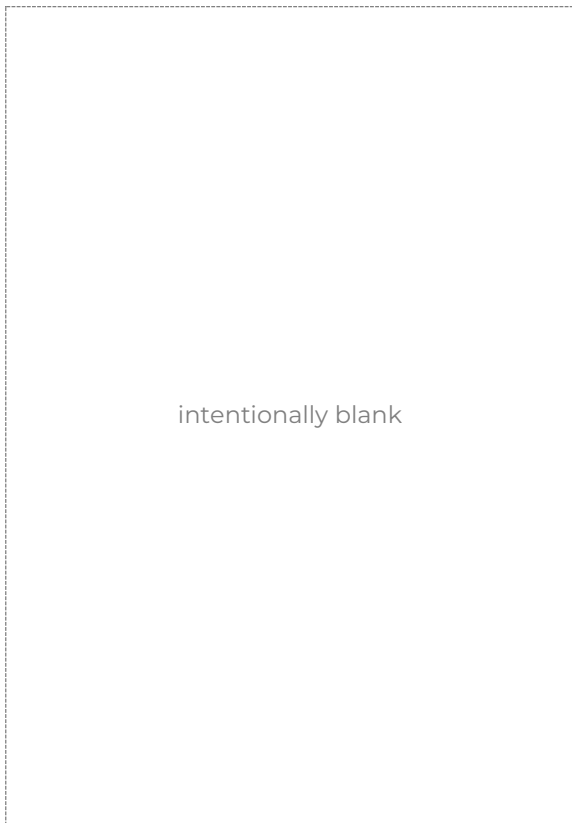
In the event that conditions encountered on site during construction appear to vary from those which were expected from the information contained in the report, DP requests that it be immediately notified. Most problems are much more readily resolved when conditions are exposed rather than at some later stage, well after the event.

Information for Contractual Purposes

Where information obtained from this report is provided for tendering purposes, it is recommended that all information, including the written report and discussion, be made available. In circumstances where the discussion or comments section is not relevant to the contractual situation, it may be appropriate to prepare a specially edited document. DP would be pleased to assist in this regard and/or to make additional report copies available for contract purposes at a nominal charge.

Site Inspection

The company will always be pleased to provide engineering inspection services for geotechnical and environmental aspects of work to which this report is related. This could range from a site visit to confirm that conditions exposed are as expected, to full time engineering presence on site.



Drawing 1



SITE LOCATION

LEGEND

- Site Boundary
- ◆ Groundwater Monitoring Wells

0 10 20 30 40 50 m

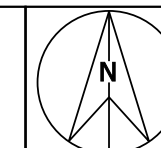


- NOTE:
1. Drawing projection in GDA94, adapted from aerial imagery from 14 June 2024
 2. Test locations are approximate only and were located using differential GPS typically accurate to ± 0.1 m depending on satellite coverage



CLIENT: Lion-Beer Wine and Spirits	
OFFICE: Sydney	DRAWN BY: KDP
SCALE: 1:1500 @A3	DATE: 12.June.2024

TITLE: Groundwater Well Locations Groundwater Monitoring 19 Nyrang Street, Lidcombe NSW
--



PROJECT:	71645.20
DRAWING No:	1
REVISION:	0

Field Notes

Groundwater Field Sheet
Project and Bore Installation Details

Bore / Standpipe ID:	BH10	
Project Name:	Tooheys November 2023 Monitoring	
Project Number:	71021.21	
Site Location:	29 Nyrnag Street, Lidcombe	
Bore RL	5.1 m AHD	
Bore Easting:		Northing:
Installation Date:	7-Dec-06	
GW Level (during drilling):		m bgl
Well Depth:	5	m bgl
Screened Interval:	1.5-5.0	m bgl
Contaminants/Comments:		

Bore Development Details - Develop using Bailer

Date/Time:	14/5/23 1pm Sunny	
Purged By:	PW/JH	
GW Level (pre-purge):	1.70	m bgl
GW Level (post-purge):	1.70	5.02 m bgl
PSH observed:	Yes / No	(interface/visual). ? mm thick
Observed Well Depth:	5.13	m bgl
Estimated Bore Volume:		L
Total Volume Purged:	12	L
Equipment:	12 volt pump DFAS free water	

pale grey, mild sulphur smell

Micropurge and Sampling Details

Date/Time:	12:13 pm 16/5	
Sampled By:	P.W	
Weather Conditions:	overcast	
GW Level (pre-purge):	2.89	m bgl
GW Level (post sample):	3.79	m bgl
PSH observed:	Yes / No	(interface/visual). ? mm thick
Observed Well Depth:	5.19	m bgl
Estimated Bore Volume:		L
Total Volume Purged:		L
Equipment:	peristaltic pump and TPS multimeter	

Water Quality Parameters

Time / Volume	Temp (°C)	DO (mg/L)	EC (µS or mS/cm)	pH	Turbidity	Redox (mV)
Stabilisation Criteria (3 readings)	0.1°C	+/- 0.3 mg/L	+/- 3%	+/- 0.1	+/- 10%	+/- 10 mV
	21.2	4.39	6847	6.4		60.1
	21.3	4.71	4231	6.26		73.2
	21.3	4.76	3600	6.25		74.5
	21.3	4.69	3510	6.24		75.4
	21.3	4.67	3019	6.23		76.2
	21.3	4.72	2549	6.25		77.1
	21.3	4.73	2561	6.25		77.0
	21.3	4.71	2531	6.25		77.2
Additional Readings Following stabilisation:	DO % Sat	SPC	TDS			

Sample Details

Sampling Depth (rationale):	4.00	m bgl,
Sample Appearance (e.g. colour, siltiness, odour):	clear	
Sample ID:	BH10	
QA/QC Samples:	-	
Sampling Containers and filtration:	500mL glass, 2x 40mL glass vials (HCl) , 1x 100mL plastic (HNO3 (filtered))	
Comments / Observations:		

Groundwater Field Sheet

Project and Bore Installation Details						
Bore / Standpipe ID:	BH7					
Project Name:	Tooheys November 2023 Monitoring					
Project Number:	71021.21					
Site Location:	29 Nyrnag Street, Lidcombe					
Bore RL	6.4 m AHD					
Bore Easting:						Northing:
Installation Date:	7-Dec-16					
GW Level (during drilling):	m bgl					
Well Depth:	6.5 m bgl					
Screened Interval:	1.5-6.5 m bgl					
Contaminants/Comments:						
Bore Development Details Bend in pipe - development requires peristaltic pump						
Date/Time:	10:30am Sunny 14/5					
Purged By:	PW / SH					
GW Level (pre-purge):	2.85 m bgl					7 use
GW Level (post-purge):	5.24 m bgl					
PSH observed:	Yes / No (interface/visual). ? mm thick					
Observed Well Depth:	7.43 m bgl S. 54					
Estimated Bore Volume:	100 L					
Total Volume Purged:	10 L					
Equipment:	12 Volt pump Per pump					
Micropurge and Sampling Details						
Date/Time:	10:00 am 16/5					
Sampled By:	P.W					
Weather Conditions:	Overcast					
GW Level (pre-purge):	3.57 m bgl					
GW Level (post sample):	4.5 m bgl					
PSH observed:	Yes / (No) (interface/visual). ? mm thick					
Observed Well Depth:	6.5 m bgl					
Estimated Bore Volume:	L					
Total Volume Purged:	L					
Equipment:	peristaltic pump and TPS multimeter					
Water Quality Parameters						
Time / Volume	Temp (°C)	DO (mg/L)	EC (µS or mS/cm)	pH	Turbidity	Redox (mV)
Stabilisation Criteria (3 readings)	0.1°C	+/- 0.3 mg/L	+/- 3%	+/- 0.1	+/- 10%	+/- 10 mV
	20.7	1.89	2185	5.54		104.5
	21.0	1.16	2136	5.56		91.0
	21.1	1.13	2120	5.57		86.0
	21.2	0.84	2092	5.56		77.1
	21.4	0.53	2067	5.59		70.0
	21.4	0.46	2057	5.57		67.9
	21.4	0.41	2042	5.55		66.1
	21.5	0.34	2017	5.50		64.9
	21.5	0.32	1939	5.39		65.8
	21.5	0.31	1901	5.34		68.7
Additional Readings Following stabilisation:	DO % Sat	SPC	TDS			
Sample Details						
Sampling Depth (rationale):	m bgl,					
Sample Appearance (e.g. colour, siltiness, odour):	Slightly cloudy					
Sample ID:	BH7					
QA/QC Samples:						
Sampling Containers and filtration:	500mL glass, 2x 40mL glass vials (HCl) , 1x 100mL plastic (HNO3 (filtered))					
Comments / Observations:						

Groundwater Field Sheet

Project and Bore Installation Details							
Bore / Standpipe ID:	BM2 BH1						
Project Name:	TooheysNovember 2023 Monitoring						
Project Number:	71021.21						
Site Location:	29 Nyrnag Street, Lidcombe						
Bore RL	6.2 m AHD						
Bore Easting:				Northing:			
Installation Date:	20-Oct-16						
GW Level (during drilling):	m bgl						
Well Depth:	14.5 m bgl						
Screened Interval:	2.0-14.5 m bgl						
Contaminants/Comments:							
Bore Development Details							
Date/Time:	12pm 14/5/23 Sunny						
Purged By:	Dw/SH						
GW Level (pre-purge):	2.31 m bgl						
GW Level (post-purge):	2.46 m bgl						
PSH observed:	Yes / No (interface/visual). ? mm thick 105k boiler						
Observed Well Depth:	14.07 m bgl						
Estimated Bore Volume:	L						
Total Volume Purged:	65 L						
Equipment:	12 Volt pump DFAS free mistur pale brown						
Micropurge and Sampling Details							
Date/Time:	11:41am 16/5						
Sampled By:	P.W						
Weather Conditions:	Overcast						
GW Level (pre-purge):	2.26 m bgl						
GW Level (post sample):	2.29 m bgl						
PSH observed:	Yes / (No) (interface/visual). ? mm thick						
Observed Well Depth:	13.9 m bgl						
Estimated Bore Volume:	L						
Total Volume Purged:	L						
Equipment:	peristaltic pump and TPS multimeter						
Water Quality Parameters							
Time / Volume	Temp (°C)	DO (mg/L)	EC (µS or mS/cm)	pH	Turbidity	Redox (mV)	
Stabilisation Criteria (3 readings)	0.1°C	+/- 0.3 mg/L	+/- 3%	+/- 0.1	+/- 10%	+/- 10 mV	
	22.0	1.39	2260	6.07		45.1	
	22.1	0.98	2726	6.02		43.7	
	22.1	0.98	2736	6.01		43.3	
	22.1	0.96	2742	6.01		42.9	
	22.1	0.95	2746	6.01		42.6	
	22.1	0.94	2749	6.01		42.2	
Additional Readings Following stabilisation:	DO % Sat	SPC	TDS				
Sample Details							
Sampling Depth (rationale):	m bgl,						
Sample Appearance (e.g. colour, siltiness, odour):	Slightly cloudy, minor debris/dirt						
Sample ID:	BH1						
QA/QC Samples:							
Sampling Containers and filtration:	500mL glass, 2x 40mL glass vials (HCl), 1x 100mL plastic (HNO3 (filtered))						
Comments / Observations:							

1SL - 5min 30sec
 in tank for 17.5mins → 47.28L + 15

Groundwater Field Sheet

Project and Bore Installation Details						
Bore / Standpipe ID:	BHF BH2					
Project Name:	Tooheys November 2023 Monitoring					
Project Number:	71021.21					
Site Location:	29 Nyrnag Street, Lidcombe					
Bore RL	6.5 m AHD					
Bore Easting:				Northing:		
Installation Date:	24-Oct-16					
GW Level (during drilling):				m bgl		
Well Depth:	14.2			m bgl		
Screened Interval:	2.0-14.2			m bgl		
Contaminants/Comments:						
Bore Development Details						
Date/Time:	12PM 14/10/23 sunny					
Purged By:	PW / OH					
GW Level (pre-purge):	2.82			m bgl		
GW Level (post-purge):	4.34			m bgl		
PSH observed:	Yes / No			(interface/visual). ? mm thick		
Observed Well Depth:	14.21			m bgl		
Estimated Bore Volume:	L					
Total Volume Purged:	80			L		
Equipment:	12 Volt pump					
<p style="text-align: center;">Water Quality Parameters</p>						
Date/Time:	11:00 am					
Sampled By:	P.W					
Weather Conditions:	over cast					
GW Level (pre-purge):	2.46			m bgl		
GW Level (post sample):	2.61			m bgl		
PSH observed:	Yes / No (interface/visual). ? mm thick					
Observed Well Depth:	14.13			m bgl		
Estimated Bore Volume:	L					
Total Volume Purged:	L					
Equipment:	peristaltic pump and TPS multimeter					
Time / Volume	Temp (°C)	DO (mg/L)	EC (µS or mS/cm)	pH	Turbidity	Redox (mV)
Stabilisation Criteria (3 readings)	0.1°C	+/- 0.3 mg/L	+/- 3%	+/- 0.1	+/- 10%	+/- 10 mV
	21.9	0.64	10345	6.17		36.0
	22.0	0.28	10762	6.18		32.5
	21.9	0.24	10800	6.18		32.0
	21.9	0.22	10816	6.18		31.6
	21.9	0.21	10832	6.18		30.9
	21.9	0.19	10855	6.19		30.2
Additional Readings Following stabilisation:	DO % Sat	SPC	TDS			
Sample Details						
Sampling Depth (rationale):	6.5 m bgl,					
Sample Appearance (e.g. colour, siltiness, odour):	slightly cloudy					
Sample ID:	BH2					
QA/QC Samples:						
Sampling Containers and filtration:	500mL glass, 2x 40mL glass vials (HCl) , 1x 100mL plastic (HNO3 (filtered))					
Comments / Observations:						

5.5 mins for 15L

plus 23 mins = 62.73 L

Groundwater Field Sheet

Project and Bore Installation Details						
Bore / Standpipe ID:	BH8					
Project Name:	TooheysNovember 2023 Monitoring					
Project Number:	71021.21					
Site Location:	29 Nyrnag Street, Lidcombe					
Bore RL	6.5 m AHD					
Bore Easting:				Northing:		
Installation Date:	7-Dec-06					
GW Level (during drilling):	m bgl					
Well Depth:	8.25 m bgl					
Screened Interval:	2.0-8.25 m bgl					
Contaminants/Comments:						
Bore Development Details						
Date/Time:	9:00am 14/5/25 Sunny					
Purged By:	pw / JH					
GW Level (pre-purge):	4.1 m bgl					
GW Level (post-purge):	8.55 m bgl					
PSH observed:	Yes / <input checked="" type="checkbox"/> No (interface/visual). ? mm thick <i>boiler</i>					
Observed Well Depth:	8.22 m bgl					
Estimated Bore Volume:	L					
Total Volume Purged:	60 L					
Equipment:	12 Volt pump <i>PFAS free mister</i>					
Micropurge and Sampling Details						
Date/Time:	9:00am 16/5					
Sampled By:	P.W					
Weather Conditions:	<i>Overcast</i>					
GW Level (pre-purge):	4.32 m bgl					
GW Level (post sample):	4.4 m bgl					
PSH observed:	Yes / <input checked="" type="checkbox"/> No (interface/visual). ? mm thick					
Observed Well Depth:	8.22 m bgl					
Estimated Bore Volume:	L					
Total Volume Purged:	L					
Equipment:	peristaltic pump and TPS multimeter					
Water Quality Parameters						
Time / Volume	Temp (°C)	DO (mg/L)	EC (µS or mS/cm)	pH	Turbidity	Redox (mV)
Stabilisation Criteria (3 readings)	0.1°C	+/- 0.3 mg/L	+/- 3%	+/- 0.1	+/- 10%	+/- 10 mV
	20.8	3.19	20085	5.8		134.2
	21.6	2.48	20328	5.81		129.1
	21.8	2.13	20410	5.82		120.9
	21.9	2.02	20411	5.82		114.1
	21.9	1.97	20396	5.82		112.1
	21.9	1.98	20382	5.82		108
	21.9	1.97	20371	5.83		106.4
Additional Readings Following stabilisation:	DO % Sat	SPC	TDS			
Sample Details						
Sampling Depth (rationale):	6.25 m bgl,					
Sample Appearance (e.g. colour, siltiness, odour):	<i>Slightly cloudy</i>					
Sample ID:	<i>BH8 & BD/20250516</i>					
QA/QC Samples:	↓					
Sampling Containers and filtration:	500mL glass, 2x 40mL glass vials (HCl) , 1x 100mL plastic (HNO3 (filtered))					
Comments / Observations:						

Certificate of Service and Calibration
Interface Meter
Heron H.Oil

Company Name	WAM Scientific
Office Address	26 Bungarra Crescent, Chipping Norton NSW 2170
Phone Number	+61 405 241 484
Contact Name	William Pak
Instrument	Heron H.Oil Interface Meter (30m)
Serial Number	01-09087
Client Name	Philip Waters (Douglas Partners)
Project Number	71021.21
Comments	-

Instrument Check			
Item	Test	Test Passed	Comments
9V Battery	Klein Tools MM300 Multimeter	✓	Battery voltage reading above 7.9V
Battery Box	Check	✓	No damage
Face and Back Plates	Check	✓	No damage
Thumb Screws	Check	✓	Rubber ends intact
Tape Hangar/Protector	Check	✓	No damage
On/Off Button	Operation	✓	Button is functional
Buzzer	Operation	✓	Intermittent tone in H ₂ O, solid tone in product
LED Signal Light	Operation	✓	LED light functional – green and red
Probe	Operation/Check	✓	Decontaminated, cleaned and tested
Tape	Condition/Check	✓	Decontaminated and cleaned, no damage
Connection	Check	✓	Probe and link connected correctly and tightly
PCB	Operation	✓	Unit is fully functional
Electronics Panel	Orientation	✓	Correctly aligned

Instrument Readings		
Product	Buzzer	LED Light
H ₂ O	Intermittent	Blinking – Red
Petroleum	Solid	Steady – Red

Declaration

WAM Scientific certifies that the above instrument was successfully tested according to manufacturer's standards and all necessary checks were conducted to ensure the instrument was fully operational prior to dispatch. The interface meter was decontaminated, cleaned and tested with a mixture of tap water and petrol, shielded from ambient light.

Checked By	William Pak
Calibration Date	14/05/2025
Calibration Due	14/11/2025

Company Name	WAM Scientific
Office Address	26 Bungarra Crescent, Chipping Norton NSW 2170
Phone Number	+61 405 241 484
Contact Name	William Pak
Instrument	YSI Pro Quatro Water Quality Meter w/ 1m Quatro Cable
Serial Number	24A101653
Client Name	Philip Waters (Douglas Partners)
Project Number	71021.21
Comments	-

Instrument Check

Item	Test	Test Passed	Comments
2 x Alkaline C-size Batteries	Klein Tools MM300 Multimeter	✓	Both batteries reading above 2.9V
Battery Saver Function	Operation	✓	Automatically turns off after 60 minutes if idle
Unit Display	Operation	✓	Screen visible, no damage
Keypad	Operation	✓	Responsive, no damage
Connection Port and Cable	Condition/Check	✓	Clean, no damage
Monitor Housing	Condition/Check	✓	No damage
Firmware	Version	✓	4.0.0
pH Probe	Condition/Calibration	✓	Calibrated and conforms to manufacturer's specs
pH millivolts for pH 7.00	Calibration	✓	pH 7.00 calibration range between 0 mV ± 50 mV
pH millivolts for pH 4.00	Calibration	✓	pH 4 mV range +165 to +180 from 7 buffer mV value
pH slope	Calibration	✓	Range between 55 to 60 mV/pH (ideal value 59 mV)
Response time < 90 seconds	Calibration	✓	Responds to correct value within 90 seconds
ORP Probe	Condition/Calibration	✓	Calibrated and conforms to manufacturer's specs
ORP Reading	Calibration	✓	Within ± 80 mV of reference Zobell Reading
Response time < 90 seconds	Calibration	✓	Responds to correct value within 90 seconds
Conductivity/Temp Probe	Condition/Calibration	✓	Calibrated and conforms to manufacturer's specs
Conductivity Cell	Calibration	✓	Conductivity cell constant 5.0 ± 1.0 in GLP file
Clean Sensor Readings	Calibration	✓	Clean sensor reads less than 3 uS/cm in dry air
Dissolved Oxygen Probe	Condition/Calibration	✓	Calibrated and conforms to manufacturer's specs
DO Cap	Condition/Calibration	✓	1.25 mil PE membrane (yellow membrane)
DO Sensor in Use	Condition	✓	Polarographic DO sensor
DO Sensor Value	Calibration	✓	(min 4.31 uA - max 8.00 uA) Avg 6.15 uA

Instrument Readings

Parameter	Standard Used	Reference No.	Calibration Value	Observed	Actual	Units
Temperature	Centre 370 Thermometer	Room Temp.	21.5	21.9	21.5	°C
pH	pH 4.00	417183	4.01	4.06	4.01	pH
pH	pH 7.00	419528	7.00	7.00	7.00	pH
ORP	Zobell A & B	420448/418958	236.7	232.8	236.7	mV
Conductivity	2760 µs/cm at 25°C	399819	2760	2766	2760	µs/cm
Zero Dissolved O ₂	NaSO ₃ in Distilled H ₂ O	426184	0.0	-0.3	0.0	%
100% Dissolved O ₂	100% Air Saturated H ₂ O	Fresh Air	100.0	101.3	100.0	%

Declaration

WAM Scientific certifies that the above instrument was successfully tested according to manufacturer's standards and all necessary checks were conducted to ensure the instrument was fully operational prior to dispatch. The calibration data supplied was obtained in accordance with manufacturer's specifications using solutions of known values.

Calibrated By	William Pak
Calibration Date	14/05/2025
Calibration Due	14/11/2025

Results Tables

Table 6: Results of Laboratory Analysis in July 2014 (µg/L)

Well	Hardness (mg CaCO ₃ /L)	Heavy Metals ¹								TRH		Benzene	Toluene	Ethyl- benzene	Total Xylene
		As	Cd	Cr ³	Cu	Pb	Hg	Ni	Zn	C ₆ -C ₉	C ₁₀ -C ₃₆				
1	130	<1	<0.1	<1	1	<1	<0.05	4	82	<10	<250	<1	<1	<1	<3
2BD1/ 180714		<1	<0.1	<1	<1	<1	<0.05	3	74	<10	<250	<1	<1	<1	<3
2	890	<1	0.2	<1	4	<1	<0.05	9	110	<10	<250	<1	<1	<1	<3
7	100	<1	<0.1	<1	3	<1	<0.05	6	28	<10	<250	<1	<1	<1	<3
8	1900	<1	0.2	<1	3	<1	<0.05	4	18	<10	<250	<1	<1	<1	<3
9	350	<1	<0.1	<1	1	<1	<0.05	2	18	<10	<250	<1	<1	<1	<3
10	380	<1	<0.1	<1	4	<1	<0.05	6	24	<10	<250	<1	<1	<1	<3
TS	-	-	-	-	-	-	-	-	-	-	-	101%	104%	102%	105% ⁴
TB	-	-	-	-	-	-	-	-	-	-	-	<1	<1	<1	<3
DGV1		13	2.4 ²	33.1 ²	1.4 ¹	121.1 ²	0.6	120.2 ²	87.4 ²	10	250	950	180	80	550

Notes:

- 1 DGV from the default guideline values provided in the Australian and New Zealand Guidelines for Fresh and Marine Water Quality (ANZG, August 2018)
- 2 Heavy metal thresholds are adjusted for a hardness of 500 mg/L per ANZECC 2000
- 3 Field replicate of sample listed immediately above
- 4 All chromium are assumed to exist in the stable Cr (III) oxidation state, as Cr (VI) will be too reactive and unstable under the normal environment.
- 5 m+p+o xylene

bold exceeds DGV

Table 7: Results of Laboratory Analysis in October 2015 ($\mu\text{g/L}$)

Well	Hardness (mg CaCO_3 /L)	Heavy Metals ¹								TRH		Benzene	Toluene	Ethyl- benzene	Total Xylene
		As	Cd	Cr ³	Cu	Pb	Hg	Ni	Zn	C ₆ - C ₉	C ₁₀ - C ₃₆				
1	670	2	<0.1	<1	4	<1	<0.05	7	55	<10	<250	<1	<1	<1	<3
2BD1/ 301015		2	<0.1	<1	<1	<1	<0.05	1	19	<10	<250	<1	<1	<1	<3
2	1000	<1	0.2	<1	2	<1	<0.05	10	50	<10	<250	<1	<1	<1	<3
7	180	3	<0.1	<1	<1	<1	<0.05	6	14	<10	<250	<1	<1	<1	<3
8	2300	<1	0.7	<1	4	<1	<0.05	4	17	<10	<250	<1	<1	<1	<3
9	420	<1	<0.1	<1	2	<1	<0.05	7	36	<10	<250	<1	<1	<1	<3
10	160	5	<0.1	<1	<1	<1	<0.05	9	8	<10	520	<1	<1	<1	<3
TS	-	-	-	-	-	-	-	-	-	-	-	81%	92%	98%	104% ⁴
TB	-	-	-	-	-	-	-	-	-	<10	-	<1	<1	<1	<3
DGV1		13	2.4 ²	33.1 ²	1.4 ¹	121.1 ²	0.6	120.2 ²	87.4 ²	10	250	950	180	80	550

Notes:

- 1 DGV from the default guideline values provided in the Australian and New Zealand Guidelines for Fresh and Marine Water Quality (ANZG, August 2018)
- 2 Heavy metal thresholds are adjusted for a hardness of 500 mg/L per ANZECC 2000
- 3 Field replicate of sample listed immediately above
- 4 All chromium are assumed to exist in the stable Cr (III) oxidation state, as Cr (VI) will be too reactive and unstable under the normal environment.
- 5 m+p+o xylene

bold exceeds DGV

Table 8: Results of Laboratory Analysis in January 2016 (µg/L)

Well	Hardness (mg CaCO ₃ /L)	Heavy Metals ¹								TRH			Benzene	Toluene	Ethyl- benzene	Total Xylene
		As	Cd	Cr ³	Cu	Pb	Hg	Ni	Zn	C ₆ -C ₉	C ₁₀ - C ₃₆	>C ₁₀ - C ₁₆				
1	360	3	<0.1	<1	<1	<1	<0.05	<1	12	<10	<250	66	<1	<1	<1	<3
2BD1/ 180714		2	<0.1	<1	<1	<1	<0.05	<1	15	<10	<250	79	<1	<1	<1	<3
2	720	<1	0.2	<1	3	<1	<0.05	14	120	<10	<250	<50	<1	<1	<1	<3
7	110	3	<0.1	<1	<1	<1	<0.05	8	13	<10	<250	<50	<1	<1	<1	<3
8	1900	<1	0.3	<1	4	<1	<0.05	4	18	<10	<250	<50	<1	<1	<1	<3
9	480	<1	<0.1	<1	2	<1	<0.05	5	43	<10	<250	<50	<1	<1	<1	<3
10	170	4	<0.1	<1	<1	<1	<0.05	2	5	<10	<250	<50	<1	<1	<1	<3
TS	-	-	-	-	-	-	-	-	-	-	-	-	94%	95%	92%	93% ⁴
TB	-	-	-	-	-	-	-	-	-	<10	-	-	<1	<1	<1	<3
DGVI		13	2.4 ²	33.1 ²	1.4 ¹	121.1 ²	0.6	120.2 ²	87.4 ²	10	250	50	950	180	80	550

Notes:

1 DGV from the default guideline values provided in the Australian and New Zealand Guidelines for Fresh and Marine Water Quality (ANZG, August 2018)

2 Heavy metal thresholds are adjusted for a hardness of 500 mg/L per ANZECC 2000

3 Field replicate of sample listed immediately above

4 All chromium are assumed to exist in the stable Cr (III) oxidation state, as Cr (VI) will be too reactive and unstable under the normal environment.

5 m+p+o xylene

bold exceeds DGV

Table 9: Results of Laboratory Analysis in January / February 2017 (µg/L)

Well	Heavy Metals ¹								TRH					Benzene	Toluene	Ethyl- benzene	Total Xylene
	As	Cd	Cr ³	Cu	Pb	Hg	Ni	Zn	C ₆ -C ₉	C ₁₀ - C ₁₄	C ₁₅ - C ₂₈	C ₂₉ - C ₃₆	>C ₁₀ - C ₁₆				
1	1	<0.1	<1	1	<1	<0.05	4	28	<10	<50	<100	<100	<50	<1	<1	<1	<3
2	<1	0.2	<1	<1	<1	<0.05	5	20	<10	<50	<100	<100	<50	<1	<1	<1	<3
7	3	<0.1	<1	<1	<1	<0.05	6	1	<10	<50	<100	<100	<50	<1	<1	<1	<3
8	<1	0.5	<1	6	<1	<0.05	4	14	<10	<50	<100	<100	<50	<1	<1	<1	<3
9	<1	<0.1	<1	2	<1	<0.05	8	38	<10	<50	<100	<100	<50	<1	<1	<1	<3
BD1	<1	<0.1	<1	1	<1	<0.05	8	34	<10	<50	<100	<100	<50	<1	<1	<1	<3
10	3	<0.1	<1	7	<1	<0.05	50	150	<10	<50	220	<100	98	<1	<1	<1	<3
DGV1	13	2.4 ²	33.1 ²	1.4 ¹	121.1 ²	0.6	120.2 ²	87.4 ²	10	250			50	950	180	80	550

Notes:

- 1 DGV from the default guideline values provided in the Australian and New Zealand Guidelines for Fresh and Marine Water Quality (ANZG, August 2018)
- 2 Heavy metal thresholds are adjusted for a hardness of 500 mg/L per ANZECC 2000
- 3 Field replicate of sample listed immediately above
- 4 All chromium are assumed to exist in the stable Cr (III) oxidation state, as Cr (VI) will be too reactive and unstable under the normal environment.
- 5 m+p+o xylene

bold exceeds DGV

Table 10: Results of Laboratory Analysis in March 2017 (µg/L)

Well	Heavy Metals ¹								TRH					Benzene	Toluene	Ethyl- benzene	Total Xylene
	As	Cd	Cr ³	Cu	Pb	Hg	Ni	Zn	C ₆ -C ₉	C ₁₀ - C ₁₄	C ₁₅ - C ₂₈	C ₂₉ - C ₃₆	>C ₁₀ - C ₁₆				
1	2	<0.1	<1	1	<1	<0.05	10	90	<10	<50	<100	<100	<50	<1	<1	<1	<3
BD1	2	<0.1	<1	<1	<1	<0.05	11	92	<10	<50	<100	<100	<50	<1	<1	<1	<3
2	<1	<0.1	<1	3	<1	<0.05	5	38	<10	<50	<100	<100	<50	<1	<1	<1	<3
7	3	<0.1	<1	<1	<1	<0.05	8	2	<10	<50	<100	<100	<50	<1	<1	<1	<3
8	<1	<0.1	<1	4	<1	<0.05	4	16	<10	<50	<100	<100	<50	<1	<1	<1	<3
9	1	<0.1	<1	3	<1	<0.05	7	42	<10	<50	<100	<100	<50	<1	<1	<1	<3
10	2	<0.1	<1	2	<1	<0.05	4	33	<10	<50	<100	<100	<50	<1	<1	<1	<3
DGVI	13	2.4 ²	33.1 ²	1.4 ¹	121.1 ²	0.6	120.2 ²	87.4 ²	10	250			50	950	180	80	550

Notes:

- 1 DGV from the default guideline values provided in the Australian and New Zealand Guidelines for Fresh and Marine Water Quality (ANZG, August 2018)
- 2 Heavy metal thresholds are adjusted for a hardness of 500 mg/L per ANZECC 2000
- 3 Field replicate of sample listed immediately above
- 4 All chromium are assumed to exist in the stable Cr (III) oxidation state, as Cr (VI) will be too reactive and unstable under the normal environment.
- 5 m+p+o xylene

bold exceeds DGV

Table 11: Results of Laboratory Analysis in August 2017 (µg/L)

Well	Heavy Metals ¹								TRH					Benzene	Toluene	Ethyl-benzene	Total Xylene
	As	Cd	Cr ³	Cu	Pb	Hg	Ni	Zn	C ₆ -C ₉	C ₁₀ -C ₁₄	C ₁₅ -C ₂₈	C ₂₉ -C ₃₆	>C ₁₀ -C ₁₆				
1	1	<0.1	<1	<1	<1	<0.05	5	19	<10	<50	<100	<100	<50	<1	<1	<1	<3
2	<1	<0.1	<1	<1	<1	<0.05	4	12	<10	<50	<100	<100	<50	<1	<1	<1	<3
BD1	<1	<0.1	<1	<1	<1	<0.05	4	13	<10	<50	<100	<100	<50	<1	<1	<1	<3
7	9	<0.1	<1	<1	<1	<0.05	17	19	<10	<50	<100	<100	<50	<1	<1	<1	<3
8	<1	1	<1	27	<1	<0.05	4	20	<10	<50	<100	<100	<50	<1	<1	<1	<3
9	5	<0.1	<1	4	<1	<0.05	30	420	<10	<50	<100	<100	<50	<1	<1	<1	<3
10	5	<0.1	<1	2	<1	<0.05	16	44	<10	<50	<100	<100	<50	<1	<1	<1	<3
DGV1	13	2.4 ²	33.1 ²	1.4 ¹	121.1 ²	0.6	120.2 ²	87.4 ²	10	250			50	950	180	80	550

Notes:

- 1 DGV from the default guideline values provided in the Australian and New Zealand Guidelines for Fresh and Marine Water Quality (ANZG, August 2018)
- 2 Heavy metal thresholds are adjusted for a hardness of 500 mg/L per ANZECC 2000
- 3 Field replicate of sample listed immediately above
- 4 All chromium are assumed to exist in the stable Cr (III) oxidation state, as Cr (VI) will be too reactive and unstable under the normal environment.
- 5 m+p+o xylene

bold exceeds DGV

Table 12: Results of Laboratory Analysis in November 2017 (µg/L)

Well	Heavy Metals ¹								TRH					Benzene	Toluene	Ethyl- benzene	Total Xylene
	As	Cd	Cr ³	Cu	Pb	Hg	Ni	Zn	C ₆ - C ₉	C ₁₀ - C ₁₄	C ₁₅ - C ₂₈	C ₂₉ - C ₃₆	>C ₁₀ - C ₁₆				
1	<1	<0.1	<1	2	<1	<0.05	2	10	<10	<50	<100	<100	<50	<1	<1	<1	<3
2	<1	<0.1	<1	<1	<1	<0.05	3	6	<10	<50	<100	<100	<50	<1	<1	<1	<3
BD1/15112017	<1	<0.1	<1	<1	<1	<0.05	3	5	<10	<50	<100	<100	<50	<1	<1	<1	<3
7	17	<0.1	<1	<1	<1	<0.05	24	69	<10	<50	<100	<100	<50	<1	<1	<1	<3
8	<1	0.4	<1	11	<1	<0.05	3	14	<10	<50	<100	<100	<50	<1	<1	<1	<3
9	1	<0.1	<1	<1	<1	<0.05	7	82	<10	<50	<100	<100	<50	<1	<1	<1	<3
10	3	<0.1	<1	<1	<1	<0.05	3	12	<10	<50	<100	<100	<50	<1	<1	<1	<3
DGV1	13	2.4 ²	33.1 ²	1.4 ¹	121.1 ²	0.6	120.2 ²	87.4 ²	10	250			50	950	180	80	550

Notes:

- 1 DGV from the default guideline values provided in the Australian and New Zealand Guidelines for Fresh and Marine Water Quality (ANZG, August 2018)
- 2 Heavy metal thresholds are adjusted for a hardness of 500 mg/L per ANZECC 2000
- 3 Field replicate of sample listed immediately above
- 4 All chromium are assumed to exist in the stable Cr (III) oxidation state, as Cr (VI) will be too reactive and unstable under the normal environment.
- 5 m+p+o xylene

bold exceeds DGV

Table 13: Results of Laboratory Analysis in August 2018 (µg/L)

Well	Heavy Metals ²								TRH					Benzene	Toluene	Ethyl- benzene	Total Xylene ⁵
	As	Cd	Cr ⁴	Cu	Pb	Hg	Ni	Zn	C ₆ - C ₉	C ₁₀ - C ₁₄	C ₁₅ - C ₂₈	C ₂₉ - C ₃₆	>C ₁₀ - C ₁₆				
1	1	<0.1	<1	3	<1	<0.05	5	30	<10	<50	<100	<100	<50	<1	<1	<1	<3
2	<1	<0.1	<1	3	<1	<0.05	3	12	<10	<50	<100	<100	<50	<1	<1	<1	<3
BD1/201808283	<1	<0.1	<1	<1	<1	<0.05	3	9	<10	<50	<100	<100	<50	<1	<1	<1	<3
7	11	0.8	<1	4	1	<0.05	77	670	<10	<50	<100	<100	<50	<1	<1	<1	<3
8	<1	1.7	<1	10	<1	<0.05	3	21	<10	<50	<100	<100	<50	<1	<1	<1	<3
9	2	<0.1	<1	5	<1	<0.05	7	110	<10	<50	<100	<100	<50	<1	<1	<1	<3
10	4	<0.1	<1	3	<1	<0.05	8	59	22	190	610	<100	230	8	<1	<1	<3
DGVI	13	2.4 ²	33.1 ²	1.4 ¹	121.1 ²	0.6	120.2 ²	87.4 ²	10	250			50	950	180	80	550 ⁵

Notes:

- 1 DGV from the default guideline values provided in the Australian and New Zealand Guidelines for Fresh and Marine Water Quality (ANZG, August 2018)
- 2 Heavy metal thresholds are adjusted for a hardness of 500 mg/L per ANZECC 2000
- 3 Field replicate of sample listed immediately above
- 4 All chromium are assumed to exist in the stable Cr (III) oxidation state, as Cr (VI) will be too reactive and unstable under the normal environment.
- 5 m+p+o xylene

bold exceeds DGV

Table 14: Results of Laboratory Analysis in November 2018 (µg/L)

Well	Heavy Metals ²								TRH					Benzene	Toluene	Ethyl- benzene	Total Xylene ⁵
	As	Cd	Cr ⁴	Cu	Pb	Hg	Ni	Zn	C ₆ - C ₉	C ₁₀ - C ₁₄	C ₁₅ - C ₂₈	C ₂₉ - C ₃₆	>C ₁₀ - C ₁₆				
1	<1	<0.1	<1	2	<1	<0.05	6	45	<10	<50	<100	<100	<50	<1	<1	<1	<3
2	<1	<0.1	<1	1	<1	<0.05	4	19	<10	<50	<100	<100	<50	<1	<1	<1	<3
BD1/20183	<1	<0.1	<1	<1	<1	<0.05	4	16	<10	<50	<100	<100	<50	<1	<1	<1	<3
7	15	<0.1	<1	1	<1	<0.05	9	10	<10	<50	<100	<100	<50	<1	<1	<1	<3
8	<1	0.7	<1	5	<1	<0.05	4	24	<10	<50	<100	<100	<50	<1	<1	<1	<3
9	3	<0.1	1	14	<1	<0.05	17	250	<10	<50	<100	<100	<50	<1	<1	<1	<3
10	4	<0.1	<1	6	<1	<0.05	6	30	<10	<50	<100	<100	<50	<1	<1	<1	<3
DGV1	13	2.4 ²	33.1 ²	1.4 ¹	121.1 ²	0.6	120.2 ²	87.4 ²	10	250			50	950	180	80	550 ⁵

Notes:

- 1 DGV from the default guideline values provided in the Australian and New Zealand Guidelines for Fresh and Marine Water Quality (ANZG, August 2018)
- 2 Heavy metal thresholds are adjusted for a hardness of 500 mg/L per ANZECC 2000
- 3 Field replicate of sample listed immediately above
- 4 All chromium are assumed to exist in the stable Cr (III) oxidation state, as Cr (VI) will be too reactive and unstable under the normal environment.
- 5 m+p+o xylene

bold exceeds DGV

Table 15: Results of Laboratory Analysis in August / September 2019 (µg/L)

Well	Heavy Metals ²								TRH					Benzene	Toluene	Ethyl- benzene	Total Xylene ⁵
	As	Cd	Cr ⁴	Cu	Pb	Hg	Ni	Zn	C ₆ - C ₉	C ₁₀ - C ₁₄	C ₁₅ - C ₂₈	C ₂₉ - C ₃₆	>C ₁₀ - C ₁₆				
1	<1	<0.1	<1	2	<1	<0.05	3	69	<10	<50	<100	<100	<50	<1	<1	<1	<3
2	<1	0.2	<1	2	<1	<0.05	4	16	<10	<50	<100	<100	<50	<1	<1	<1	<3
BD1/ 201909023	<1	0.2	<1	2	<1	<0.05	4	19	<10	<50	<100	<100	<50	<1	<1	<1	<3
7	42	<0.1	<1	1	<1	<0.05	22	14	<10	<50	<100	<100	<50	<1	<1	<1	<3
8	<1	0.8	<1	8	<1	<0.05	4	16	<10	<50	<100	<100	<50	<1	<1	<1	<3
9	3	<0.1	<1	2	<1	<0.05	3	39	<10	<50	<100	<100	<50	<1	<1	<1	<3
10	3	<0.1	<1	2	<1	<0.05	22	34	<10	<50	<100	<100	<50	<1	<1	<1	<3
DGV1	13	2.4 ²	33.1 ²	1.4 ¹	121.1 ²	0.6	120.2 ²	87.4 ²	10	250			50	950	180	80	550 ⁵

Notes:

- 1 DGV from the default guideline values provided in the Australian and New Zealand Guidelines for Fresh and Marine Water Quality (ANZG, August 2018)
- 2 Heavy metal thresholds are adjusted for a hardness of 500 mg/L per ANZECC 2000
- 3 Field replicate of sample listed immediately above
- 4 All chromium are assumed to exist in the stable Cr (III) oxidation state, as Cr (VI) will be too reactive and unstable under the normal environment.
- 5 m+p+o xylene

bold exceeds DGV

Table 16: Results of Laboratory Analysis in November 2019 (µg/L)

Well	Heavy Metals ²								TRH					Benzene	Toluene	Ethyl- benzene	Total Xylene ⁵
	As	Cd	Cr ⁴	Cu	Pb	Hg	Ni	Zn	C ₆ - C ₉	C ₁₀ - C ₁₄	C ₁₅ -C ₂₈	C ₂₉ -C ₃₆	>C ₁₀ - C ₁₆				
1	<1	<0.1	<1	<1	<1	<0.05	6	40	<10	<50	<100	<100	<50	<1	<1	<1	<3
BD1/ 201911253	<1	<0.1	<1	1	<1	<0.05	6	40	<10	<50	<100	<100	<50	<1	<1	<1	<3
2	<1	<0.1	<1	1	<1	<0.05	5	25	<10	<50	<100	<100	<50	<1	<1	<1	<3
7	8	<0.1	<1	1	<1	<0.05	22	39	<10	<50	<100	<100	<50	<1	<1	<1	<3
8	<1	0.3	<1	1	<1	<0.05	4	21	<10	<50	<100	<100	<50	<1	<1	<1	<3
9	3	<0.1	<1	2	<1	<0.05	3	42	<10	<50	<100	<100	<50	<1	<1	<1	<3
10	3	<0.1	<1	<1	<1	<0.05	5	24	<10	<50	<100	<100	<50	<1	<1	<1	<3
DGV1	13	2.4 ²	33.1 ²	1.4 ¹	121.12	0.6	120.2 ²	87.4 ²	10	250			50	950	180	80	550 ⁵

Notes:

- 1 DGV from the default guideline values provided in the Australian and New Zealand Guidelines for Fresh and Marine Water Quality (ANZG, August 2018)
- 2 Heavy metal thresholds are adjusted for a hardness of 500 mg/L per ANZECC 2000
- 3 Field replicate of sample listed immediately above
- 4 All chromium are assumed to exist in the stable Cr (III) oxidation state, as Cr (VI) will be too reactive and unstable under the normal environment.
- 5 m+p+o xylene

bold exceeds DGV

Table 17: Results of Laboratory Analysis in May 2020 (µg/L)

Well	Heavy Metals ²								TRH					Benzene	Toluene	Ethyl- benzene	Total Xylene ⁵
	As	Cd	Cr ⁴	Cu	Pb	Hg	Ni	Zn	C ₆ - C ₉	C ₁₀ - C ₁₄	C ₁₅ - C ₂₈	C ₂₉ - C ₃₆	>C ₁₀ - C ₁₆				
1	<1	<0.1	<1	7	<1	<0.05	3	<1	<10	<50	<100	<100	<50	<1	<1	<1	<3
BD1/ 20200513 ³	2	<0.1	<1	<1	<1	<0.05	2	<1	<10	<50	<100	<100	<50	<1	<1	<1	<3
2	<1	<0.1	<1	17	<1	<0.05	5	3	<10	<50	<100	<100	<50	<1	<1	<1	<3
7	3	<0.1	<1	19	<1	<0.05	13	16	<10	<50	<100	<100	<50	<1	<1	<1	<3
8	<1	1.9	<1	26	<1	<0.05	11	68	<10	<50	<100	<100	<50	<1	<1	<1	<3
9	5	<0.1	<1	20	<1	<0.05	9	49	<10	<50	<100	<100	<50	<1	<1	<1	<3
10	2	<0.1	<1	9	<1	<0.05	6	14	<10	<50	110	<100	<50	<1	<1	<1	<3
DGV1	13	2.4 ²	33.1 ²	1.4 ¹	121.1 ²	0.6	120.2 ²	87.4 ²	10	250			50	950	180	80	550 ⁵

Notes:

- 1 DGV from the default guideline values provided in the Australian and New Zealand Guidelines for Fresh and Marine Water Quality (ANZG, August 2018)
- 2 Heavy metal thresholds are adjusted for a hardness of 500 mg/L per ANZECC 2000
- 3 Field replicate of sample listed immediately above
- 4 All chromium are assumed to exist in the stable Cr (III) oxidation state, as Cr (VI) will be too reactive and unstable under the normal environment.
- 5 m+p+o xylene

bold exceeds DGV

Table 18: Results of Laboratory Analysis in November 2020 (µg/L)

Well	Heavy Metals ²								TRH					Benzene	Toluene	Ethyl- benzene	Total Xylene ⁵
	As	Cd	Cr ⁴	Cu	Pb	Hg	Ni	Zn	C ₆ - C ₉	C ₁₀ - C ₁₄	C ₁₅ - C ₂₈	C ₂₉ - C ₃₆	>C ₁₀ - C ₁₆				
1	2	<0.1	<1	<1	<1	<0.05	3	11	<10	<50	<100	<100	<50	<1	<1	<1	<3
2	<1	<0.1	<1	<1	<1	<0.05	4	17	<10	<50	<100	<100	<50	<1	<1	<1	<3
BD1 20201126	2	<0.1	<1	<1	<1	<0.05	3	15	<10	<50	<100	<100	<50	<1	<1	<1	<3
7	1	<0.1	<1	5	<1	<0.05	8	11	<10	<50	<100	<100	<50	<1	<1	<1	<3
8	<1	1.2	<1	21	<1	<0.05	5	31	<10	<50	<100	<100	<50	<1	<1	<1	<3
9	2	<0.1	<1	<1	<1	<0.05	3	12	<10	<50	<100	<100	<50	<1	<1	<1	<3
10	2	<0.1	<1	16	<1	<0.05	10	74	<10	<50	<100	<100	<50	<1	<1	<1	<3
DGV1	13	2.4 ²	33.1 ²	1.4 ¹	121.1 ²	0.6	120.2 ²	87.4 ²	10	250			50	950	180	80	550 ⁵

Notes:

- 1 DGV from the default guideline values provided in the Australian and New Zealand Guidelines for Fresh and Marine Water Quality (ANZG, August 2018)
- 2 Heavy metal thresholds are adjusted for a hardness of 500 mg/L per ANZECC 2000
- 3 Field replicate of sample listed immediately above
- 4 All chromium are assumed to exist in the stable Cr (III) oxidation state, as Cr (VI) will be too reactive and unstable under the normal environment.
- 5 m+p+o xylene

bold exceeds DGV

Table 19: Results of Laboratory Analysis in May 2021 (µg/L)

Well	Heavy Metals ²								TRH					Benzene	Toluene	Ethyl- benzene	Total Xylene ⁵
	As	Cd	Cr ⁴	Cu	Pb	Hg	Ni	Zn	C ₆₋₉	C ₁₀₋₁₄	C ₁₅₋₂₈	C ₂₉₋₃₆	>C ₁₀₋₁₆				
1	1	<0.1	<1	1	<1	<0.05	4	10	<10	<50	<100	<100	<50	<1	<1	<1	<3
BD1 20210528	1	<0.1	<1	<1	<1	<0.05	3	3	<10	<50	<100	<100	<50	<1	<1	<1	<3
2	<1	<0.1	<1	13	<1	<0.05	9	43	<10	<50	<100	<100	<50	<1	<1	<1	<3
7	<1	0.3	<1	12	<1	<0.05	35	220	<10	<50	<100	<100	<50	<1	<1	<1	<3
8	<1	2.6	<1	<1	<1	<0.05	7	82	<10	<50	<100	<100	<50	<1	<1	<1	<3
9	3	<0.1	<1	15	<1	<0.05	6	33	<10	<50	<100	<100	<50	<1	<1	<1	<3
10	4	<0.1	<1	<1	<1	<0.05	12	32	<10	<50	<100	<100	<50	<1	<1	<1	<3
DGV1	13	2.4 ²	33.1 ²	1.4 ¹	121.1 ²	0.6	120.2 ²	87.4 ²	10	250			50	950	180	80	550 ⁵

Notes:

- 1 DGV from the default guideline values provided in the Australian and New Zealand Guidelines for Fresh and Marine Water Quality (ANZG, August 2018)
- 2 Heavy metal thresholds are adjusted for a hardness of 500 mg/L per ANZECC 2000
- 3 Field replicate of sample listed immediately above
- 4 All chromium are assumed to exist in the stable Cr (III) oxidation state, as Cr (VI) will be too reactive and unstable under the normal environment.
- 5 m+p+o xylene

bold exceeds DGV

Table 20: Results of Laboratory Analysis in November 2021 (µg/L)

Well	Heavy Metals ²								TRH					Benzene	Toluene	Ethyl- benzene	Total Xylene ⁵
	As	Cd	Cr ⁴	Cu	Pb	Hg	Ni	Zn	C ₆₋₉	C ₁₀₋₁₄	C ₁₅₋₂₈	C ₂₉₋₃₆	>C ₁₀₋₁₆				
1	<1	<0.1	<1	<1	<1	<0.05	5	33	<10	<50	<100	<100	<50	<1	<1	<1	<3
2	<1	<0.1	<1	<1	<1	<0.05	5	22	<10	<50	<100	<100	<50	<1	<1	<1	<3
7	4	0.1	<1	<1	<1	<0.05	17	10	<10	<50	<100	<100	<50	<1	<1	<1	<3
8	<1	1.4	<1	2	<1	<0.05	9	89	<10	<50	<100	<100	<50	<1	<1	<1	<3
BD1	<1	1.5	<1	2	<1	<0.05	10	97	<10	<50	<100	<100	<50	<1	<1	<1	<3
9	1	<0.1	<1	2	<1	<0.05	8	67	<10	<50	<100	<100	<50	<1	<1	<1	<3
10	5	<0.1	<1	<1	<1	<0.05	15	38	<10	<50	<100	<100	<50	<1	<1	<1	<3
DGVI	13	2.4 ²	33.1 ²	1.4 ¹	121.1 ²	0.6	120.2 ²	87.4 ²	10	250			50	950	180	80	625 ⁵

Notes:

- 1 DGV from the default guideline values provided in the Australian and New Zealand Guidelines for Fresh and Marine Water Quality (ANZG, August 2018)
- 2 Heavy metal thresholds are adjusted for a hardness of 500 mg/L per ANZECC 2000
- 3 Field replicate of sample listed immediately above
- 4 All chromium are assumed to exist in the stable Cr (III) oxidation state, as Cr (VI) will be too reactive and unstable under the normal environment.
- 5 m+p+o xylene

bold exceeds DGV

Table 21: Results of Laboratory Analysis in May 2022 (µg/L)

Well	Heavy Metals ²								TRH					Benzene	Toluene	Ethyl- benzene	Total Xylene ⁵
	As	Cd	Cr ⁴	Cu	Pb	Hg	Ni	Zn	C ₆ - C ₉	C ₁₀ - C ₁₄	C ₁₅ - C ₂₈	C ₂₉ - C ₃₆	>C ₁₀ - C ₁₆				
1	<1	<0.1	<1	19	<1	<0.05	2	20	<10	<50	<100	<100	<50	<1	<1	<1	<3
2	<1	<0.1	<1	2	<1	<0.05	7	84	<10	<50	<100	<100	<50	<1	<1	<1	<3
7	<1	<0.1	<1	35	<1	<0.05	19	72	<10	<50	<100	<100	<50	<1	<1	<1	<3
8	<1	1.0	<1	<1	<1	<0.05	5	18	<10	<50	<100	<100	<50	<1	<1	<1	<3
BD1	<1	1.1	<1	2	<1	<0.05	4	19	<10	<50	<100	<100	<50	<1	<1	<1	<3
9	3	<0.1	<1	4	<1	<0.05	14	89	<10	<50	<100	<100	<50	<1	<1	<1	<3
10	2	<0.1	<1	2	<1	<0.05	13	43	<10	<50	<100	130	<50	<1	<1	<1	<3
DGVI	13	2.4 ²	33.1 ²	1.4 ¹	121.1 ²	0.6	120.2 ²	87.4 ²	10	250			50	950	180	80	625 ⁵

Notes:

- 1 DGV from the default guideline values provided in the Australian and New Zealand Guidelines for Fresh and Marine Water Quality (ANZG, August 2018)
- 2 Heavy metal thresholds are adjusted for a hardness of 500 mg/L per ANZECC 2000
- 3 Field replicate of sample listed immediately above
- 4 All chromium are assumed to exist in the stable Cr (III) oxidation state, as Cr (VI) will be too reactive and unstable under the normal environment.
- 5 m+p+o xylene

bold exceeds DGV

Table 22: Results of Laboratory Analysis in December 2022 (µg/L)

Well	Heavy Metals ²								TRH					Benzene	Toluene	Ethyl- benzene	Total Xylene ⁵
	As	Cd	Cr ⁴	Cu	Pb	Hg	Ni	Zn	C ₆ - C ₉	C ₁₀ - C ₁₄	C ₁₅ - C ₂₈	C ₂₉ - C ₃₆	>C ₁₀ - C ₁₆				
1	2	<0.1	<1	<1	<1	<0.05	4	39	<10	<50	<100	<100	<50	<1	<1	<1	<3
BD1	2	<0.1	<1	<1	<1	<0.05	3	34	<10	<50	<100	<100	<50				
2	<1	0.1	<1	4	<1	<0.05	4	340	<10	<50	<100	<100	<50	<1	<1	<1	<3
7	2	<0.1	<1	4	<1	<0.05	12	37	<10	<50	<100	<100	<50	<1	<1	<1	<3
8	1	2.5	<1	3	<1	<0.05	9	56	<10	<50	<100	<100	<50	<1	<1	<1	<3
9	1	<0.1	<1	1	<1	<0.05	4	33	<10	<50	<100	<100	<50	<1	<1	<1	<3
10	7	<0.1	<1	<1	<1	<0.05	3	11	<10	78	570	610	100	<1	<1	<1	<3
10 – silica clean up	-	-	-	-	-	-	-	-	-	<50	160	300	59	-	-	-	-
DGV1	13	2.4 ²	33.1 ²	1.4 ¹	121.1 ²	0.6	120.2 ²	87.4 ²	10	250			50	950	180	80	6255

Notes:

- 1 DGV from the default guideline values provided in the Australian and New Zealand Guidelines for Fresh and Marine Water Quality (ANZG, August 2018)
- 2 Heavy metal thresholds are adjusted for a hardness of 500 mg/L per ANZECC 2000
- 3 Field replicate of sample listed immediately above
- 4 All chromium are assumed to exist in the stable Cr (III) oxidation state, as Cr (VI) will be too reactive and unstable under the normal environment.
- 5 m+p+o xylene

bold exceeds DGV

Table 23: Results of Laboratory Analysis in May 2023 (µg/L)

Well	Heavy Metals ²								TRH								Benzene	Toluene	Ethyl- benzene	Total Xylene ⁵
	As	Cd	Cr ⁴	Cu	Pb	Hg	Ni	Zn	C ₆ - C ₉	C ₁₀ -C ₁₄	C ₁₅ -C ₂₈	C ₂₉ -C ₃₆	>C ₁₀ -C ₁₆	C6-C10	C6-C10- BTEX (fl)	F2				
1	<1	<0.1	<1	<1	<1	<0.05	4	9	<10	<50	<100	<100	<50	<10	<10	<50	<1	<1	<1	<3
2	<1	<0.1	<1	<1	<1	<0.05	3	5	<10	<50	<100	<100	<50	<10	<10	<50	<1	<1	<1	<3
7	4	<0.1	<1	4	<1	<0.05	10	38	<10	<50	<100	<100	<50	<10	<10	<50	<1	<1	<1	<3
8	<1	0.1	<1	3	<1	<0.05	5	16	<10	<50	<100	<100	<50	<10	<10	<50	<1	<1	<1	<3
BD1/20230530	<1	0.1	<1	<1	<1	<0.05	5	12	<10	<50	<100	<100	<50	<10	<10	<50	<1	<1	<1	<3
9	<1	<0.1	<1	2	<1	<0.05	3	22	<10	<50	<100	<100	<50	<10	<10	<50	<1	<1	<1	<3
10	3	<0.1	<1	<1	<1	<0.05	2	2	<10	<50	<100	<100	<50	<10	<10	<50	<1	<1	<1	<3
DGV1	13	2.4 ²	33.1 ²	1.4 ¹	121.1 ²	0.6	120.2 ²	87.4 ²	10	250			50	-	-	-	950	180	80	625 ⁵

Notes:

- 1 DGV from the default guideline values provided in the Australian and New Zealand Guidelines for Fresh and Marine Water Quality (ANZG, August 2018)
- 2 Heavy metal thresholds are adjusted for a hardness of 500 mg/L per ANZECC 2000
- 3 Field replicate of sample listed immediately above
- 4 All chromium are assumed to exist in the stable Cr (III) oxidation state, as Cr (VI) will be too reactive and unstable under the normal environment.
- 5 m+p+o xylene

bold exceeds DGV

Table 24: Results of Laboratory Analysis in November 2023 (µg/L)

Well	Heavy Metals ²								TRH									Benzene	Toluene	Ethyl- benzene	Total Xylene ⁵	
	As	Cd	Cr ⁴	Cu	Pb	Hg	Ni	Zn	C ₆ - C ₉	C ₁₀ -C ₁₄	C ₁₅ -C ₂₈	C ₂₉ -C ₃₆	>C ₁₀ -C ₁₆	>C ₁₆ -C ₃₄	>C ₃₄ -C ₄₀	C ₆ -C ₁₀	C ₆ -C ₁₀ - BTEX (fl)					F ₂
1	<1	0.1	<1	6	<1	<0.05	10	960	<10	<50	390	<100	390	420	<100	<10	<10	<50	<1	<1	<1	<3
2	<1	<0.1	<1	<1	<1	<0.05	2	30	<10	<50	<100	<100	<50	<100	<100	<10	<10	<50	<1	<1	<1	<3
7	1	<0.1	<1	4	<1	<0.05	6	25	<10	<50	<100	<100	<50	<100	<100	<10	<10	<50	<1	<1	<1	<3
8	<1	0.3	<1	2	<1	<0.05	3	18	<10	<50	<100	<100	<50	<100	<100	<10	<10	<50	<1	<1	<1	<3
BD1/20231124	<1	0.4	<1	6	<1	<0.05	3	20	<10	<50	<100	<100	<50	<100	<100	<10	<10	<50	<1	<1	<1	<3
9	1	<0.1	<1	6	<1	<0.05	6	62	<10	<50	<100	<100	<50	<100	<100	<10	<10		<1	<1	<1	<3
10	<1	<0.1	1	2	<1	<0.05	<1	10	<10	60	210	<100	71	240	<100	<10	<10	71	<1	<1	<1	<3
Spike	-	-	-	-	-	-	-	-	-	-	-	-	-	-	-	-	-	-	106%	103%	112%	107-115%
Blank	-	-	-	-	-	-	-	-	<10	<10	-	-	-	-	-	-	-	-	<1	<1	<1	<3
Rinsate	-	-	-	-	-	-	-	-	<10	<10	<100	<100	<50	<100	<100	<10	<10	<50	<1	<1	<1	<3
DGV1	13	2.4 ²	33.1 ²	1.4 ¹	121.1 ²	0.6	120.2 ²	87.4 ²	10	250			50	100	100	10	10	50	950	180	80	625 ⁵

Notes:

- 1 DGV from the default guideline values provided in the Australian and New Zealand Guidelines for Fresh and Marine Water Quality (ANZG, August 2018)
- 2 Heavy metal thresholds are adjusted for a hardness of 500 mg/L per ANZECC 2000
- 3 Field replicate of sample listed immediately above
- 4 All chromium are assumed to exist in the stable Cr (III) oxidation state, as Cr (VI) will be too reactive and unstable under the normal environment.
- 5 m+p+o xylene

bold exceeds DGV

Table 25: Results of Laboratory Analysis in May 2024 (µg/L)

Well	Heavy Metals ²								TRH									Benzene	Toluene	Ethyl- benzene	Total Xylene ⁵	
	As	Cd	Cr ⁴	Cu	Pb	Hg	Ni	Zn	C ₆ - C ₉	C ₁₀ -C ₁₄	C ₁₅ -C ₂₈	C ₂₉ -C ₃₆	>C ₁₀ -C ₁₆	>C ₁₆ -C ₃₄	>C ₃₄ -C ₄₀	C ₆ -C ₁₀	C ₆ -C ₁₀ - BTEX (f1)					F2
1	<1	<0.1	<1	<1	<1	<0.05	3	33	<10	<50	<100	<100	<50	<100	<100	<10	<10	<50	<1	<1	<1	<3
BD1/20240524 ³	<1	<0.1	<1	3	<1	<0.05	3	31	<10	<50	<100	<100	<50	<100	<100	<10	<10	<50	<1	<1	<1	<3
2	<1	0.2	<1	1	<1	<0.05	6	63	<10	<50	<100	<100	<50	<100	<100	<10	<10	<50	<1	<1	<1	<3
7	1	<0.1	<1	<1	<1	<0.05	14	50	<10	<50	<100	<100	<50	<100	<100	<10	<10	<50	<1	<1	<1	<3
8	2	0.4	<1	<1	<1	<0.05	10	27	<10	<50	<100	<100	<50	<100	<100	<10	<10	<50	<1	<1	<1	<3
9	<1	<0.1	<1	<1	<1	<0.05	2	28	<10	<50	<100	<100	<50	<100	<100	<10	<10	<50	<1	<1	<1	<3
10	3	<0.1	<1	1	<1	<0.05	7	36	<10	<50	<100	<100	<50	<100	<100	<10	<10	<50	<1	<1	<1	<3
Spike	-	-	-	-	-	-	-	-	-	-	-	-	-	-	-	-	-	-	98%	95%	98%	87-90%
Blank	-	-	-	-	-	-	-	-	<10	<10	-	-	-	-	-	-	-	-	<1	<1	<1	<3
Rinsate	<1	<0.1	<1	<1	<1	<0.05	<1	<1	<10	<10	<100	<100	<50	<100	<100	<10	<10	<50	<1	<1	<1	<3
DGVI	13	2.4 ²	33.1 ²	1.4 ¹	121.1 ²	0.6	120.2 ²	87.4 ²	10	250			50	100	100	10	10	50	950	180	80	625 ⁵

Notes:

- 1 DGV from the default guideline values provided in the Australian and New Zealand Guidelines for Fresh and Marine Water Quality (ANZG, August 2018)
- 2 Heavy metal thresholds are adjusted for a hardness of 500 mg/L per ANZECC 2000
- 3 Field replicate of sample listed immediately above
- 4 All chromium are assumed to exist in the stable Cr (III) oxidation state, as Cr (VI) will be too reactive and unstable under the normal environment.
- 5 m+p+o xylene

bold exceeds DGV

Table 26: Results of Laboratory Analysis in December 2024 (µg/L)

Well	Heavy Metals ²								TRH										Benzene	Toluene	Ethyl- benzene	Total Xylene ⁵
	As	Cd	Cr ⁴	Cu	Pb	Hg	Ni	Zn	C ₆ - C ₉	C ₁₀ -C ₁₄	C ₁₅ -C ₂₈	C ₂₉ -C ₃₆	>C ₁₀ -C ₁₆	>C ₁₆ -C ₃₄	>C ₃₄ -C ₄₀	C ₆ -C ₁₀	C ₆ -C ₁₀ - BTEX (f1)	F2				
1	<1	<0.1	<1	<1	<1	<0.05	4	17	<10	<50	<100	<100	<50	<100	<100	<10	<10	<50	<1	<1	<1	<3
BD1/20240524 ³	<1	<0.1	<1	<1	<1	<0.05	3	18	<10	<50	<100	<100	<50	<100	<100	<10	<10	<50	<1	<1	<1	<3
2	<1	<0.1	<1	1	<1	<0.05	4	8	<10	<50	<100	<100	<50	<100	<100	<10	<10	<50	<1	<1	<1	<3
7	<1	<0.1	<1	<1	<1	<0.05	13	29	<10	<50	<100	<100	<50	<100	<100	<10	<10	<50	<1	<1	<1	<3
8	<1	1.2	<1	<1	<1	<0.05	7	52	<10	<50	<100	<100	<50	<100	<100	<10	<10	<50	<1	<1	<1	<3
9	<1	<0.1	<1	1	<1	<0.05	3	19	<10	<50	<100	<100	<50	<100	<100	<10	<10	<50	<1	<1	<1	<3
10	3	<0.1	<1	2	<1	<0.05	7	47	<10	130	750	1400	300	300	890	<10	<10	300	<1	<1	<1	<3
Spike	-	-	-	-	-	-	-	-	-	-	-	-	-	-	-	-	-	-	119%	113%	120%	106-109%
Blank	-	-	-	-	-	-	-	-	<10	<10	-	-	-	-	-	-	-	-	<1	<1	<1	<3
Rinsate	<1	<0.1	<1	<1	<1	<0.05	<1	<1	<10	<10	<100	<100	<50	<100	<100	<10	<10	<50	<1	<1	<1	<3
DGVI	13	2.4 ²	33.1 ²	1.4 ¹	121.1 ²	0.6	120.2 ²	87.4 ²	10	250			50	100	100	10	10	50	950	180	80	625 ⁵

Notes:

- 1 DGV from the default guideline values provided in the Australian and New Zealand Guidelines for Fresh and Marine Water Quality (ANZG, August 2018)
- 2 Heavy metal thresholds are adjusted for a hardness of 500 mg/L per ANZECC 2000
- 3 Field replicate of sample listed immediately above
- 4 All chromium are assumed to exist in the stable Cr (III) oxidation state, as Cr (VI) will be too reactive and unstable under the normal environment.
- 5 m+p+o xylene

Bold and Shading – Exceeds DGV. **Bold.** Analyte detected.

Table 27: Results of Laboratory Analysis in May 2025 (µg/L)

Well	Heavy Metals ²								TRH									Benzene	Toluene	Ethyl- benzene	Total Xylene ⁵	
	As	Cd	Cr ⁴	Cu	Pb	Hg	Ni	Zn	C ₆ - C ₉	C ₁₀ -C ₁₄	C ₁₅ -C ₂₈	C ₂₉ -C ₃₆	>C ₁₀ -C ₁₆	>C ₁₆ -C ₃₄	>C ₃₄ -C ₄₀	C ₆ -C ₁₀	C ₆ -C ₁₀ - BTEX (f1)					F2
1	<1	<0.1	<1	<1	<1	<0.05	2	38	<10	<50	<100	<100	<50	<100	<100	<10	<10	<50	<1	<1	<1	<3
2	<1	<0.1	<1	<1	<1	<0.05	7	15	<10	<50	<100	<100	<50	<100	<100	<10	<10	<50	<1	<1	<1	<3
7	<1	<0.1	<1	<1	<1	<0.05	10	28	<10	<50	<100	<100	<50	<100	<100	<10	<10	<50	<1	<1	<1	<3
8	<1	0.4	<1	<1	<1	<0.05	6	20	<10	<50	<100	<100	<50	<100	<100	<10	<10	<50	<1	<1	<1	<3
BD1/20250516 ³	<1	0.6	<1	<1	<1	<0.05	6	22	<10	<50	<100	<100	<50	<100	<100	<10	<10	<50	<1	<1	<1	<3
9	<1	<0.1	<1	<1	<1	<0.05	3	20	<10	<50	<100	<100	<50	<100	<100	<10	<10	<50	<1	<1	<1	<3
10	<1	<0.1	<1	3	<1	<0.05	9	25	<10	<50	<100	<100	<50	<100	<100	<10	<10	<50	<1	<1	<1	<3
Spike	-	-	-	-	-	-	-	-	-	-	-	-	-	-	-	-	-	-	90%	87%	86%	86-87%
Blank	-	-	-	-	-	-	-	-	-	-	-	-	-	-	-	-	-	-	<1	<1	<1	<3
Rinsate	<1	<0.1	<1	<1	<1	<0.05	<1	<1	<10	<50	<100	<100	<50	<100	<100	<10	<10	<50	<1	<1	<1	<3
DGV1	13	2.4 ²	33.1 ²	1.4 ¹	121.1 ²	0.6	120.2 ²	87.4 ²	10	250			50	100	100	10	10	50	950	180	80	625 ⁵

Notes:

- 1 DGV from the default guideline values provided in the Australian and New Zealand G. Guidelines for Fresh and Marine Water Quality (ANZG, August 2018)
- 2 Heavy metal thresholds are adjusted for a hardness of 500 mg/L per ANZECC 2000. Hardness in May 2025 ranged between 86 and 1900 mg/L.
- 3 Field replicate of sample listed immediately above
- 4 All chromium are assumed to exist in the stable Cr (III) oxidation state, as Cr (VI) will be too reactive and unstable under the normal environment.
- 5 m+p+o xylene

Bold and Shading – Exceeds DGV. **Bold.** Analyte detected.

Laboratory Certificates

CERTIFICATE OF ANALYSIS 380926

Client Details

Client	Douglas Partners Pty Ltd
Attention	Kurt Plambeck
Address	96 Hermitage Rd, West Ryde, NSW, 2114

Sample Details

Your Reference	<u>71021.21, Lidcombe</u>
Number of Samples	10 Water
Date samples received	16/05/2025
Date completed instructions received	16/05/2025

Analysis Details

Please refer to the following pages for results, methodology summary and quality control data.
 Samples were analysed as received from the client. Results relate specifically to the samples as received.
 Results are reported on a dry weight basis for solids and on an as received basis for other matrices.

Report Details

Date results requested by	23/05/2025
Date of Issue	23/05/2025
NATA Accreditation Number 2901. This document shall not be reproduced except in full.	
Accredited for compliance with ISO/IEC 17025 - Testing. Tests not covered by NATA are denoted with *	

Results Approved By

Giovanni Agosti, Group Technical Manager
 Timothy Toll, Senior Chemist

Authorised By

Nancy Zhang, Laboratory Manager

vTRH(C6-C10)/BTEXN in Water						
Our Reference		380926-1	380926-2	380926-3	380926-4	380926-5
Your Reference	UNITS	BH1	BH2	BH7	BH8	BH9
Date Sampled		16/05/2025	16/05/2025	16/05/2025	16/05/2025	16/05/2025
Type of sample		Water	Water	Water	Water	Water
Date extracted	-	20/05/2025	20/05/2025	20/05/2025	20/05/2025	20/05/2025
Date analysed	-	20/05/2025	20/05/2025	20/05/2025	20/05/2025	20/05/2025
TRH C ₆ - C ₉	µg/L	<10	<10	<10	<10	<10
TRH C ₆ - C ₁₀	µg/L	<10	<10	<10	<10	<10
TRH C ₆ - C ₁₀ less BTEX (F1)	µg/L	<10	<10	<10	<10	<10
Benzene	µg/L	<1	<1	<1	<1	<1
Toluene	µg/L	<1	<1	<1	<1	<1
Ethylbenzene	µg/L	<1	<1	<1	<1	<1
m+p-xylene	µg/L	<2	<2	<2	<2	<2
o-xylene	µg/L	<1	<1	<1	<1	<1
Naphthalene	µg/L	<1	<1	<1	<1	<1
Surrogate Dibromofluoromethane	%	104	105	106	106	105
Surrogate Toluene-d8	%	99	100	100	99	100
Surrogate 4-Bromofluorobenzene	%	94	94	95	96	96

vTRH(C6-C10)/BTEXN in Water						
Our Reference		380926-6	380926-7	380926-8	380926-9	380926-10
Your Reference	UNITS	BH10	TS	TB	Rinsate	BD/20250516
Date Sampled		16/05/2025	16/05/2025	16/05/2025	16/05/2025	16/05/2025
Type of sample		Water	Water	Water	Water	Water
Date extracted	-	20/05/2025	20/05/2025	20/05/2025	20/05/2025	20/05/2025
Date analysed	-	20/05/2025	20/05/2025	20/05/2025	20/05/2025	20/05/2025
TRH C ₆ - C ₉	µg/L	<10	[NA]	[NA]	<10	<10
TRH C ₆ - C ₁₀	µg/L	<10	[NA]	[NA]	<10	<10
TRH C ₆ - C ₁₀ less BTEX (F1)	µg/L	<10	[NA]	[NA]	<10	<10
Benzene	µg/L	<1	90%	<1	<1	<1
Toluene	µg/L	<1	87%	<1	<1	<1
Ethylbenzene	µg/L	<1	86%	<1	<1	<1
m+p-xylene	µg/L	<2	87%	<2	<2	<2
o-xylene	µg/L	<1	86%	<1	<1	<1
Naphthalene	µg/L	<1	[NA]	[NA]	<1	<1
Surrogate Dibromofluoromethane	%	106	103	105	105	106
Surrogate Toluene-d8	%	100	100	100	98	100
Surrogate 4-Bromofluorobenzene	%	94	102	94	96	95

svTRH (C10-C40) in Water						
Our Reference		380926-1	380926-2	380926-3	380926-4	380926-5
Your Reference	UNITS	BH1	BH2	BH7	BH8	BH9
Date Sampled		16/05/2025	16/05/2025	16/05/2025	16/05/2025	16/05/2025
Type of sample		Water	Water	Water	Water	Water
Date extracted	-	20/05/2025	20/05/2025	20/05/2025	20/05/2025	20/05/2025
Date analysed	-	21/05/2025	21/05/2025	21/05/2025	21/05/2025	21/05/2025
TRH C ₁₀ - C ₁₄	µg/L	<50	<50	<50	<50	<50
TRH C ₁₅ - C ₂₈	µg/L	<100	<100	<100	<100	<100
TRH C ₂₉ - C ₃₆	µg/L	<100	<100	<100	<100	<100
Total +ve TRH (C10-C36)	µg/L	<50	<50	<50	<50	<50
TRH >C ₁₀ - C ₁₆	µg/L	<50	<50	<50	<50	<50
TRH >C ₁₀ - C ₁₆ less Naphthalene (F2)	µg/L	<50	<50	<50	<50	<50
TRH >C ₁₆ - C ₃₄	µg/L	<100	<100	<100	<100	<100
TRH >C ₃₄ - C ₄₀	µg/L	<100	<100	<100	<100	<100
Total +ve TRH (>C10-C40)	µg/L	<50	<50	<50	<50	<50
Surrogate o-Terphenyl	%	124	114	113	116	113

svTRH (C10-C40) in Water				
Our Reference		380926-6	380926-9	380926-10
Your Reference	UNITS	BH10	Rinsate	BD/20250516
Date Sampled		16/05/2025	16/05/2025	16/05/2025
Type of sample		Water	Water	Water
Date extracted	-	20/05/2025	20/05/2025	20/05/2025
Date analysed	-	21/05/2025	21/05/2025	21/05/2025
TRH C ₁₀ - C ₁₄	µg/L	<50	<50	<50
TRH C ₁₅ - C ₂₈	µg/L	<100	<100	<100
TRH C ₂₉ - C ₃₆	µg/L	<100	<100	<100
Total +ve TRH (C10-C36)	µg/L	<50	<50	<50
TRH >C ₁₀ - C ₁₆	µg/L	<50	<50	<50
TRH >C ₁₀ - C ₁₆ less Naphthalene (F2)	µg/L	<50	<50	<50
TRH >C ₁₆ - C ₃₄	µg/L	<100	<100	<100
TRH >C ₃₄ - C ₄₀	µg/L	<100	<100	<100
Total +ve TRH (>C10-C40)	µg/L	<50	<50	<50
Surrogate o-Terphenyl	%	116	114	117

HM in water - dissolved						
Our Reference		380926-1	380926-2	380926-3	380926-4	380926-5
Your Reference	UNITS	BH1	BH2	BH7	BH8	BH9
Date Sampled		16/05/2025	16/05/2025	16/05/2025	16/05/2025	16/05/2025
Type of sample		Water	Water	Water	Water	Water
Date prepared	-	19/05/2025	19/05/2025	19/05/2025	19/05/2025	19/05/2025
Date analysed	-	19/05/2025	19/05/2025	19/05/2025	19/05/2025	19/05/2025
Arsenic-Dissolved	µg/L	<1	<1	<1	<1	<1
Cadmium-Dissolved	µg/L	<0.1	<0.1	<0.1	0.4	<0.1
Chromium-Dissolved	µg/L	<1	<1	<1	<1	<1
Copper-Dissolved	µg/L	<1	<1	<1	<1	<1
Lead-Dissolved	µg/L	<1	<1	<1	<1	<1
Mercury-Dissolved	µg/L	<0.05	<0.05	<0.05	<0.05	<0.05
Nickel-Dissolved	µg/L	2	7	10	6	3
Zinc-Dissolved	µg/L	38	15	28	20	20

HM in water - dissolved				
Our Reference		380926-6	380926-9	380926-10
Your Reference	UNITS	BH10	Rinsate	BD/20250516
Date Sampled		16/05/2025	16/05/2025	16/05/2025
Type of sample		Water	Water	Water
Date prepared	-	19/05/2025	19/05/2025	19/05/2025
Date analysed	-	19/05/2025	19/05/2025	19/05/2025
Arsenic-Dissolved	µg/L	<1	<1	<1
Cadmium-Dissolved	µg/L	<0.1	<0.1	0.6
Chromium-Dissolved	µg/L	<1	<1	<1
Copper-Dissolved	µg/L	3	<1	<1
Lead-Dissolved	µg/L	<1	<1	<1
Mercury-Dissolved	µg/L	<0.05	<0.05	<0.05
Nickel-Dissolved	µg/L	9	<1	6
Zinc-Dissolved	µg/L	25	<1	22

Cations in water Dissolved						
Our Reference		380926-1	380926-2	380926-3	380926-4	380926-5
Your Reference	UNITS	BH1	BH2	BH7	BH8	BH9
Date Sampled		16/05/2025	16/05/2025	16/05/2025	16/05/2025	16/05/2025
Type of sample		Water	Water	Water	Water	Water
Date digested	-	23/05/2025	23/05/2025	23/05/2025	23/05/2025	23/05/2025
Date analysed	-	23/05/2025	23/05/2025	23/05/2025	23/05/2025	23/05/2025
Calcium - Dissolved	mg/L	21	59	8.7	100	40
Magnesium - Dissolved	mg/L	19	170	16	390	180
Hardness (calc) equivalent CaCO ₃	mg/L	130	830	86	1,900	850

Cations in water Dissolved		
Our Reference		380926-6
Your Reference	UNITS	BH10
Date Sampled		16/05/2025
Type of sample		Water
Date digested	-	23/05/2025
Date analysed	-	23/05/2025
Calcium - Dissolved	mg/L	14
Magnesium - Dissolved	mg/L	33
Hardness (calc) equivalent CaCO ₃	mg/L	170

Method ID	Methodology Summary
Metals-020	<p>Determination of various metals by ICP-AES.</p> <p>Total Phosphate determined stoichiometrically from Phosphorus (assumed to be present as Phosphate).</p> <p>Where salts (oxides, chlorides etc.) are calculated from the element concentration stoichiometrically there is no guarantee that the salt form is completely soluble in the acids used in the preparation.</p>
Metals-021	<p>Determination of Mercury by Cold Vapour AAS.</p>
Metals-022	<p>Determination of various metals by ICP-MS.</p> <p>Please note for Bromine and Iodine, any forms of these elements that are present are included together in the one result reported for each of these two elements.</p> <p>Where salts (oxides, chlorides etc.) are calculated from the element concentration stoichiometrically there is no guarantee that the salt form is completely soluble in the acids used in the preparation.</p>
Org-020	<p>Soil samples are extracted with Dichloromethane/Acetone and waters with Dichloromethane and analysed by GC-FID. F2 = (>C10-C16)-Naphthalene as per NEPM B1 Guideline on Investigation Levels for Soil and Groundwater (HSLs Tables 1A (3, 4)). Note Naphthalene is determined from the VOC analysis.</p>
Org-023	<p>Water samples are analysed directly by purge and trap GC-MS.</p>
Org-023	<p>Soil samples are extracted with methanol and spiked into water prior to analysing by purge and trap GC-MS. Water samples are analysed directly by purge and trap GC-MS. F1 = (C6-C10)-BTEX as per NEPM B1 Guideline on Investigation Levels for Soil and Groundwater.</p>

QUALITY CONTROL: vTRH(C6-C10)/BTEXN in Water					Duplicate			Spike Recovery %		
Test Description	Units	PQL	Method	Blank	#	Base	Dup.	RPD	LCS-W1	[NT]
Date extracted	-			20/05/2025	[NT]	[NT]	[NT]	[NT]	20/05/2025	[NT]
Date analysed	-			20/05/2025	[NT]	[NT]	[NT]	[NT]	20/05/2025	[NT]
TRH C ₆ - C ₉	µg/L	10	Org-023	<10	[NT]	[NT]	[NT]	[NT]	80	[NT]
TRH C ₆ - C ₁₀	µg/L	10	Org-023	<10	[NT]	[NT]	[NT]	[NT]	80	[NT]
Benzene	µg/L	1	Org-023	<1	[NT]	[NT]	[NT]	[NT]	81	[NT]
Toluene	µg/L	1	Org-023	<1	[NT]	[NT]	[NT]	[NT]	80	[NT]
Ethylbenzene	µg/L	1	Org-023	<1	[NT]	[NT]	[NT]	[NT]	80	[NT]
m+p-xylene	µg/L	2	Org-023	<2	[NT]	[NT]	[NT]	[NT]	80	[NT]
o-xylene	µg/L	1	Org-023	<1	[NT]	[NT]	[NT]	[NT]	81	[NT]
Naphthalene	µg/L	1	Org-023	<1	[NT]	[NT]	[NT]	[NT]	[NT]	[NT]
Surrogate Dibromofluoromethane	%		Org-023	100	[NT]	[NT]	[NT]	[NT]	99	[NT]
Surrogate Toluene-d8	%		Org-023	100	[NT]	[NT]	[NT]	[NT]	101	[NT]
Surrogate 4-Bromofluorobenzene	%		Org-023	93	[NT]	[NT]	[NT]	[NT]	105	[NT]

Client Reference: 71021.21, Lidcombe

QUALITY CONTROL: svTRH (C10-C40) in Water							Duplicate		Spike Recovery %	
Test Description	Units	PQL	Method	Blank	#	Base	Dup.	RPD	LCS-W2	380926-2
Date extracted	-			20/05/2025	1	20/05/2025	20/05/2025		20/05/2025	20/05/2025
Date analysed	-			21/05/2025	1	21/05/2025	21/05/2025		21/05/2025	21/05/2025
TRH C ₁₀ - C ₁₄	µg/L	50	Org-020	<50	1	<50	<50	0	118	116
TRH C ₁₅ - C ₂₈	µg/L	100	Org-020	<100	1	<100	<100	0	112	112
TRH C ₂₉ - C ₃₆	µg/L	100	Org-020	<100	1	<100	<100	0	114	109
TRH >C ₁₀ - C ₁₆	µg/L	50	Org-020	<50	1	<50	<50	0	118	116
TRH >C ₁₆ - C ₃₄	µg/L	100	Org-020	<100	1	<100	<100	0	112	112
TRH >C ₃₄ - C ₄₀	µg/L	100	Org-020	<100	1	<100	<100	0	114	109
Surrogate o-Terphenyl	%		Org-020	114	1	124	116	7	95	124

Client Reference: 71021.21, Lidcombe

QUALITY CONTROL: HM in water - dissolved				Duplicate				Spike Recovery %		
Test Description	Units	PQL	Method	Blank	#	Base	Dup.	RPD	LCS-W4	380926-2
Date prepared	-			19/05/2025	1	19/05/2025	19/05/2025		19/05/2025	19/05/2025
Date analysed	-			19/05/2025	1	19/05/2025	19/05/2025		19/05/2025	19/05/2025
Arsenic-Dissolved	µg/L	1	Metals-022	<1	1	<1	<1	0	92	99
Cadmium-Dissolved	µg/L	0.1	Metals-022	<0.1	1	<0.1	<0.1	0	91	95
Chromium-Dissolved	µg/L	1	Metals-022	<1	1	<1	<1	0	88	103
Copper-Dissolved	µg/L	1	Metals-022	<1	1	<1	<1	0	88	87
Lead-Dissolved	µg/L	1	Metals-022	<1	1	<1	<1	0	93	81
Mercury-Dissolved	µg/L	0.05	Metals-021	<0.05	1	<0.05	[NT]		93	[NT]
Nickel-Dissolved	µg/L	1	Metals-022	<1	1	2	2	0	88	96
Zinc-Dissolved	µg/L	1	Metals-022	<1	1	38	41	8	89	108

QUALITY CONTROL: HM in water - dissolved				Duplicate				Spike Recovery %		
Test Description	Units	PQL	Method	Blank	#	Base	Dup.	RPD	[NT]	380926-4
Date prepared	-			[NT]	3	19/05/2025	19/05/2025		[NT]	19/05/2025
Date analysed	-			[NT]	3	19/05/2025	19/05/2025		[NT]	19/05/2025
Arsenic-Dissolved	µg/L	1	Metals-022	[NT]	3	<1	[NT]		[NT]	[NT]
Cadmium-Dissolved	µg/L	0.1	Metals-022	[NT]	3	<0.1	[NT]		[NT]	[NT]
Chromium-Dissolved	µg/L	1	Metals-022	[NT]	3	<1	[NT]		[NT]	[NT]
Copper-Dissolved	µg/L	1	Metals-022	[NT]	3	<1	[NT]		[NT]	[NT]
Lead-Dissolved	µg/L	1	Metals-022	[NT]	3	<1	[NT]		[NT]	[NT]
Mercury-Dissolved	µg/L	0.05	Metals-021	[NT]	3	<0.05	<0.05	0	[NT]	75
Nickel-Dissolved	µg/L	1	Metals-022	[NT]	3	10	[NT]		[NT]	[NT]
Zinc-Dissolved	µg/L	1	Metals-022	[NT]	3	28	[NT]		[NT]	[NT]

Client Reference: 71021.21, Lidcombe

QUALITY CONTROL: Cations in water Dissolved				Duplicate			Spike Recovery %			
Test Description	Units	PQL	Method	Blank	#	Base	Dup.	RPD	LCS-W1	380926-2
Date digested	-			23/05/2025	1	23/05/2025	23/05/2025		23/05/2025	23/05/2025
Date analysed	-			23/05/2025	1	23/05/2025	23/05/2025		23/05/2025	23/05/2025
Calcium - Dissolved	mg/L	0.5	Metals-020	<0.5	1	21	22	5	112	90
Magnesium - Dissolved	mg/L	0.5	Metals-020	<0.5	1	19	19	0	108	80
Hardness (calc) equivalent CaCO ₃	mg/L	3	Metals-020	[NT]	1	130	130	0	[NT]	[NT]

Result Definitions

NT	Not tested
NA	Test not required
INS	Insufficient sample for this test
PQL	Practical Quantitation Limit
<	Less than
>	Greater than
RPD	Relative Percent Difference
LCS	Laboratory Control Sample
NS	Not specified
NEPM	National Environmental Protection Measure
NR	Not Reported

Quality Control Definitions

Blank	This is the component of the analytical signal which is not derived from the sample but from reagents, glassware etc, can be determined by processing solvents and reagents in exactly the same manner as for samples.
Duplicate	This is the complete duplicate analysis of a sample from the process batch. If possible, the sample selected should be one where the analyte concentration is easily measurable.
Matrix Spike	A portion of the sample is spiked with a known concentration of target analyte. The purpose of the matrix spike is to monitor the performance of the analytical method used and to determine whether matrix interferences exist.
LCS (Laboratory Control Sample)	This comprises either a standard reference material or a control matrix (such as a blank sand or water) fortified with analytes representative of the analyte class. It is simply a check sample.
Surrogate Spike	Surrogates are known additions to each sample, blank, matrix spike and LCS in a batch, of compounds which are similar to the analyte of interest, however are not expected to be found in real samples.

Laboratory Acceptance Criteria

Duplicate sample and matrix spike recoveries may not be reported on smaller jobs, however, were analysed at a frequency to meet or exceed NEPM requirements. All samples are tested in batches of 20. The duplicate sample RPD and matrix spike recoveries for the batch were within the laboratory acceptance criteria.

Filters, swabs, wipes, tubes and badges will not have duplicate data as the whole sample is generally extracted during sample extraction.

Spikes for Physical and Aggregate Tests are not applicable.

For VOCs in water samples, three vials are required for duplicate or spike analysis.

Duplicates: >10xPQL - RPD acceptance criteria will vary depending on the analytes and the analytical techniques but is typically in the range 20%-50% – see ELN-P05 QA/QC tables for details; <10xPQL - RPD are higher as the results approach PQL and the estimated measurement uncertainty will statistically increase.

Matrix Spikes, LCS and Surrogate recoveries: Generally 70-130% for inorganics/metals (not SPOCAS); 60-140% for organics/SPOCAS (+/-50% surrogates) and 10-140% for labile SVOCs (including labile surrogates), ultra trace organics and speciated phenols is acceptable.

In circumstances where no duplicate and/or sample spike has been reported at 1 in 10 and/or 1 in 20 samples respectively, the sample volume submitted was insufficient in order to satisfy laboratory QA/QC protocols.

When samples are received where certain analytes are outside of recommended technical holding times (THTs), the analysis has proceeded. Where analytes are on the verge of breaching THTs, every effort will be made to analyse within the THT or as soon as practicable.

Where sampling dates are not provided, Envirolab are not in a position to comment on the validity of the analysis where recommended technical holding times may have been breached.

Measurement Uncertainty estimates are available for most tests upon request.

Analysis of aqueous samples typically involves the extraction/digestion and/or analysis of the liquid phase only (i.e. NOT any settled sediment phase but inclusive of suspended particles if present), unless stipulated on the Envirolab COC and/or by correspondence. Notable exceptions include certain Physical Tests (pH/EC/BOD/COD/Apparent Colour etc.), Solids testing, total recoverable metals and PFAS where solids are included by default.

Air volumes are typically provided by customers (often as flow rate(s) and sampling time(s) and/or simply volumes) sampled or exposure times (determines 'volume' passive badges are exposed to)). Hence in such circumstances the volume measurement is inevitably not covered by Envirolab's NATA accreditation. An exception may occur where Envirolab Newcastle does the sampling where accreditation exists for certain types of sampling and hence volume determination(s). Note air volumes are often used to determine concentrations for dust and/or analyses on filters, sorbents and in impingers. For canister sampling, the air volume is covered by Envirolab's NATA accreditation.

Urine Analysis - The BEI values listed are taken from the 2022 edition of "TLVs and BEIs Threshold Limits" by ACGIH.

Project No: 71021.21	Suburb: Lidcombe	To: Lab name <i>Enviro Lab</i>
Project Manager: Kurt Plambeck	Order Number:	Lab address
Email: Kurt.Plambeck@douglaspartners.com.au		Attn: Name
Turnaround time: <input checked="" type="checkbox"/> Standard <input type="checkbox"/> 72 hour <input type="checkbox"/> 48 hour <input type="checkbox"/> 24 hour <input type="checkbox"/> Same day	Lab phone Lab email	

Prior Storage: Fridge Freezer Esky Shelf **Do samples contain 'potential' HBM?** No Yes (If YES, then handle, transport and store in accordance with FPM HAZID)

Lab ID	Sample ID			Date Sampled	Sample Type	Container Type	Analytes										Notes/ Preservation/ Additional Requirements					
	Location/ Other ID	Depth From	Depth To		S - soil W - water M - Material	G - glass P - plastic	Metals	TRH	BTEX													
1	BH1			16/5	W		X	X	X													
2	BH2			↓	↓		X	X	X													
3	BH7					X	X	X														
4	BH8					X	X	X														
5	BH9					X	X	X														
6	BH10					X	X	X														
7/8	TS/TB					X	X	X														
9	Rinsate					X	X	X														
10	BD/20250516					X	X	X														

EnviroLAB
12 Ashley St
Chatswood NSW 2067
Ph: (02) 9910 6200

Job No: 380926

Date Received: 16/5/25
Time Received: 1605

Received By: *KW*

Temp: Cool/Ambient

Cooling: Ice/Leakback 10°C

Security: Intact/Broken/None

Metals to analyse:	LAB RECEIPT
Number of samples in container:	Lab Ref. No: 380926
Send results to: Douglas Partners Pty Ltd, Kurt Plambeck	Received by: <i>Katy Wayne</i>
Address:	Date & Time: 16/5/25 1605
Relinquished by: P.W	Signed: <i>[Signature]</i>
Phone: 0402 057 147	
Date: 16/05/2025	

SAMPLE RECEIPT ADVICE

Client Details

Client	Douglas Partners Pty Ltd
Attention	Kurt Plambeck

Sample Login Details

Your reference	71021.21, Lidcombe
Envirolab Reference	380926
Date Sample Received	16/05/2025
Date Instructions Received	16/05/2025
Date Results Expected to be Reported	23/05/2025

Sample Condition

Samples received in appropriate condition for analysis	Yes
No. of Samples Provided	10 Water
Turnaround Time Requested	Standard
Temperature on Receipt (°C)	10
Cooling Method	Ice Pack
Sampling Date Provided	YES

Comments

Nil

Please direct any queries to:

Aileen Hie

Phone: 02 9910 6200
Fax: 02 9910 6201
Email: ahie@envirolab.com.au

Jacinta Hurst

Phone: 02 9910 6200
Fax: 02 9910 6201
Email: jhurst@envirolab.com.au

Analysis Underway, details on the following page:



Sample ID	vTRH(C6-C10)/BTEXN in Water	svTRH (C10-C40) in Water	HM in water - dissolved
BH1	✓	✓	✓
BH2	✓	✓	✓
BH7	✓	✓	✓
BH8	✓	✓	✓
BH9	✓	✓	✓
BH10	✓	✓	✓
TS	✓		
TB	✓		
Rinsate	✓	✓	✓
BD/20250516	✓	✓	✓

The '✓' indicates the testing you have requested. **THIS IS NOT A REPORT OF THE RESULTS.**

Additional Info

Sample storage - Waters are routinely disposed of approximately 1 month and soils approximately 2 months from receipt.

Requests for longer term sample storage must be received in writing.

Please contact the laboratory immediately if observed settled sediment present in water samples is to be included in the extraction and/or analysis (exceptions include certain Physical Tests (pH/EC/BOD/COD/Apparent Colour etc.), Solids testing, Total Recoverable metals and PFAS analysis where solids are included by default.

TAT for Micro is dependent on incubation. This varies from 3 to 6 days.

Mann-Kendall Trend Analysis

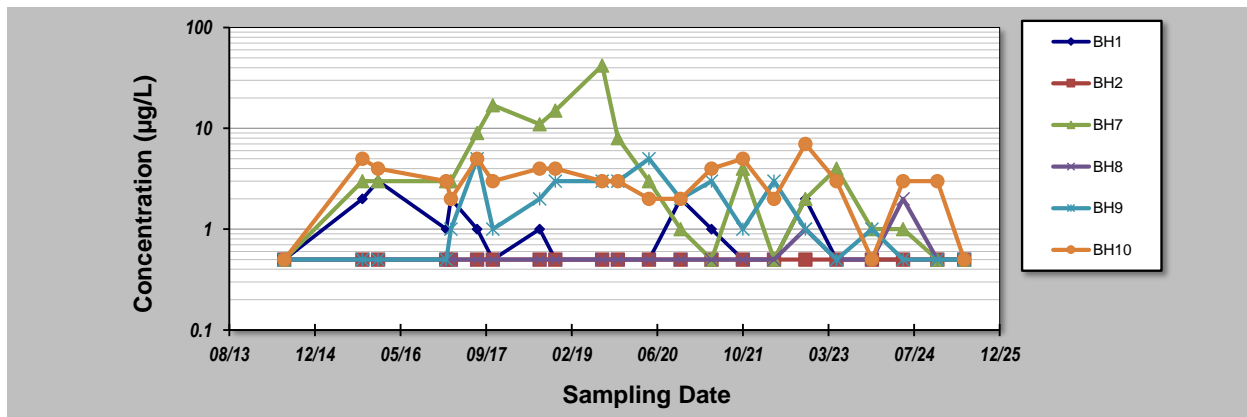
GSI MANN-KENDALL TOOLKIT for Constituent Trend Analysis

Evaluation Date: 23-May-25	Job ID: 71021
Facility Name: Tooheys	Constituent: Arsenic
Conducted By: KDP	Concentration Units: µg/L

Sampling Point ID:	BH1	BH2	BH7	BH8	BH9	BH10
--------------------	------------	------------	------------	------------	------------	-------------

Sampling Event	Sampling Date	ARSENIC CONCENTRATION (µg/L)					
1	1-Jul-14	0.5	0.5	0.5	0.5	0.5	0.5
2	1-Oct-15	2	0.5	3	0.5	0.5	5
3	1-Jan-16	3	0.5	3	0.5	0.5	4
4	1-Feb-17	1	0.5	3	0.5	0.5	3
5	1-Mar-17	2	0.5	3	0.5	1	2
6	1-Aug-17	1	0.5	9	0.5	5	5
7	1-Nov-17	0.5	0.5	17	0.5	1	3
8	1-Aug-18	1	0.5	11	0.5	2	4
9	1-Nov-18	0.5	0.5	15	0.5	3	4
10	1-Aug-19	0.5	0.5	42	0.5	3	3
11	1-Nov-19	0.5	0.5	8	0.5	3	3
12	1-May-20	0.5	0.5	3	0.5	5	2
13	1-Nov-20	2	0.5	1	0.5	2	2
14	1-May-21	1	0.5	0.5	0.5	3	4
15	1-Nov-21	0.5	0.5	4	0.5	1	5
16	1-May-22	0.5	0.5	0.5	0.5	3	2
17	1-Nov-22	2	0.5	2	1	1	7
18	1-May-23	0.5	0.5	4	0.5	0.5	3
19	24-Nov-23	0.5	0.5	1	0.5	1	0.5
20	24-May-24	0.5	0.5	1	2	0.5	3
21	10-Dec-24	0.5	0.5	0.5	0.5	0.5	3
22	16-May-25	0.5	0.5	0.5	0.5	0.5	0.5
23							
24							
25							

Coefficient of Variation:	0.75	0.00	1.55	0.56	0.84	0.52
Mann-Kendall Statistic (S):	-69	0	-63	29	-9	-36
Confidence Factor:	97.3%	48.9%	96.0%	78.3%	58.8%	83.6%
Concentration Trend:	Decreasing	Stable	Decreasing	No Trend	Stable	Stable



Notes:

- At least four independent sampling events per well are required for calculating the trend. Methodology is valid for 4 to 40 samples.
- Confidence in Trend = Confidence (in percent) that constituent concentration is increasing (S>0) or decreasing (S<0): >95% = Increasing or Decreasing; ≥ 90% = Probably Increasing or Probably Decreasing; < 90% and S>0 = No Trend; < 90%, S≤0, and COV ≥ 1 = No Trend; < 90% and COV < 1 = Stable.
- Methodology based on "MAROS: A Decision Support System for Optimizing Monitoring Plans", J.J. Aziz, M. Ling, H.S. Rifai, C.J. Newell, and J.R. Gonzales, *Ground Water*, 41(3):355-367, 2003.

Result less than laboratory PQL. Half the PQL adopted as concentration

DISCLAIMER: The GSI Mann-Kendall Toolkit is available "as is". Considerable care has been exercised in preparing this software product; however, no party, including without limitation GSI Environmental Inc., makes any representation or warranty regarding the accuracy, correctness, or completeness of the information contained herein, and no such party shall be liable for any direct, indirect, consequential, incidental or other damages resulting from the use of this product or the information contained herein. Information in this publication is subject to change without notice. GSI Environmental Inc., disclaims any responsibility or obligation to update the information contained herein.

GSI Environmental Inc., www.gsi-net.com

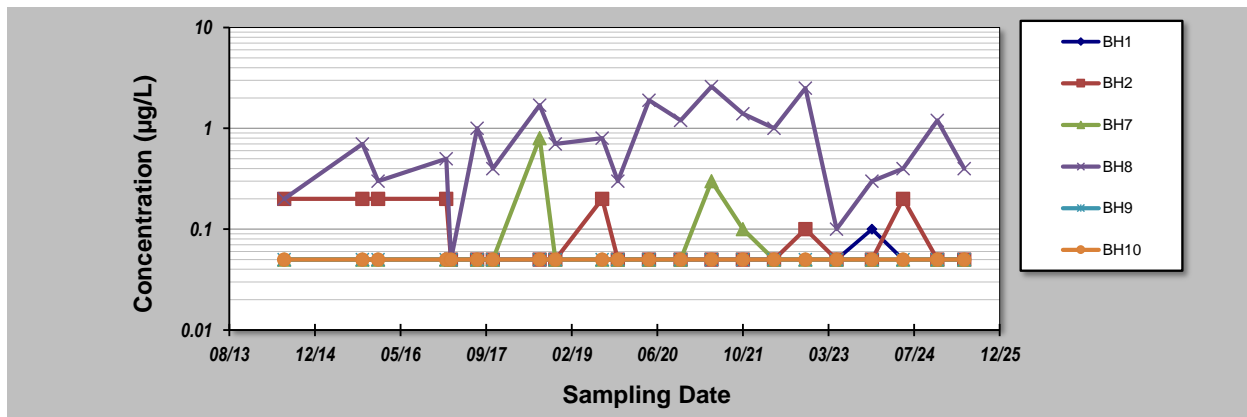
GSI MANN-KENDALL TOOLKIT for Constituent Trend Analysis

Evaluation Date: 23-May-25	Job ID: 71021
Facility Name: Tooheys	Constituent: Cadmium
Conducted By: KDP	Concentration Units: µg/L

Sampling Point ID:	BH1	BH2	BH7	BH8	BH9	BH10
--------------------	------------	------------	------------	------------	------------	-------------

Sampling Event	Sampling Date	CADMIUM CONCENTRATION (µg/L)					
1	1-Jul-14	0.05	0.2	0.05	0.2	0.05	0.05
2	1-Oct-15	0.05	0.2	0.05	0.7	0.05	0.05
3	1-Jan-16	0.05	0.2	0.05	0.3	0.05	0.05
4	1-Feb-17	0.05	0.2	0.05	0.5	0.05	0.05
5	1-Mar-17	0.05	0.05	0.05	0.05	0.05	0.05
6	1-Aug-17	0.05	0.05	0.05	1	0.05	0.05
7	1-Nov-17	0.05	0.05	0.05	0.4	0.05	0.05
8	1-Aug-18	0.05	0.05	0.8	1.7	0.05	0.05
9	1-Nov-18	0.05	0.05	0.05	0.7	0.05	0.05
10	1-Aug-19	0.05	0.2	0.05	0.8	0.05	0.05
11	1-Nov-19	0.05	0.05	0.05	0.3	0.05	0.05
12	1-May-20	0.05	0.05	0.05	1.9	0.05	0.05
13	1-Nov-20	0.05	0.05	0.05	1.2	0.05	0.05
14	1-May-21	0.05	0.05	0.3	2.6	0.05	0.05
15	1-Nov-21	0.05	0.05	0.1	1.4	0.05	0.05
16	1-May-22	0.05	0.05	0.05	1	0.05	0.05
17	1-Nov-22	0.05	0.1	0.05	2.5	0.05	0.05
18	1-May-23	0.05	0.05	0.05	0.1	0.05	0.05
19	24-Nov-23	0.1	0.05	0.05	0.3	0.05	0.05
20	24-May-24	0.05	0.2	0.05	0.4	0.05	0.05
21	10-Dec-24	0.05	0.05	0.05	1.2	0.05	0.05
22	16-May-25	0.05	0.05	0.05	0.4	0.05	0.05
23							
24							
25							

Coefficient of Variation:	0.20	0.73	1.70	0.83	0.00	0.00
Mann-Kendall Statistic (S):	15	-51	2	42	0	0
Confidence Factor:	65.2%	92.0%	51.1%	87.5%	48.9%	48.9%
Concentration Trend:	No Trend	Prob. Decreasing	No Trend	No Trend	Stable	Stable



Notes:

- At least four independent sampling events per well are required for calculating the trend. Methodology is valid for 4 to 40 samples.
- Confidence in Trend = Confidence (in percent) that constituent concentration is increasing (S>0) or decreasing (S<0): >95% = Increasing or Decreasing; ≥ 90% = Probably Increasing or Probably Decreasing; < 90% and S>0 = No Trend; < 90%, S≤0, and COV ≥ 1 = No Trend; < 90% and COV < 1 = Stable.
- Methodology based on "MAROS: A Decision Support System for Optimizing Monitoring Plans", J.J. Aziz, M. Ling, H.S. Rifai, C.J. Newell, and J.R. Gonzales, *Ground Water*, 41(3):355-367, 2003.

Result less than laboratory PQL. Half the PQL adopted as concentration

DISCLAIMER: The GSI Mann-Kendall Toolkit is available "as is". Considerable care has been exercised in preparing this software product; however, no party, including without limitation GSI Environmental Inc., makes any representation or warranty regarding the accuracy, correctness, or completeness of the information contained herein, and no such party shall be liable for any direct, indirect, consequential, incidental or other damages resulting from the use of this product or the information contained herein. Information in this publication is subject to change without notice. GSI Environmental Inc., disclaims any responsibility or obligation to update the information contained herein.

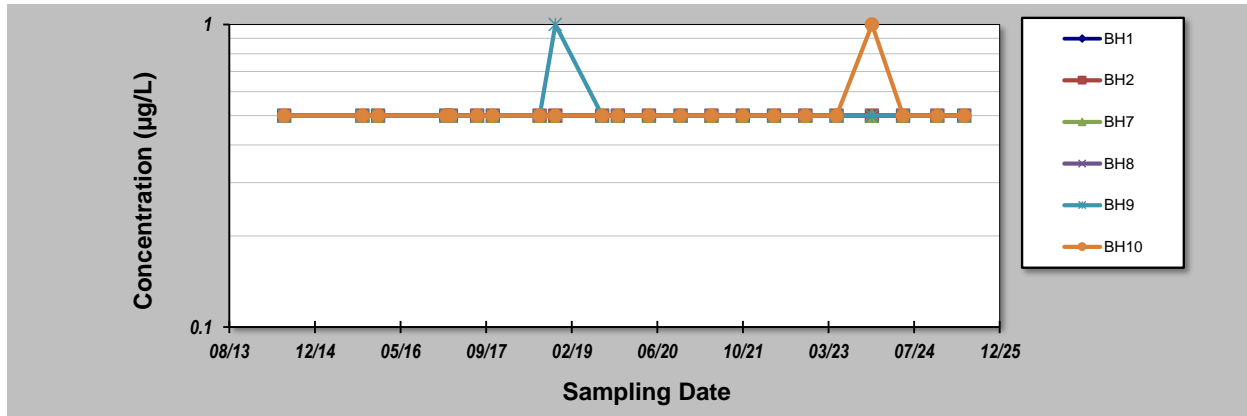
GSI MANN-KENDALL TOOLKIT for Constituent Trend Analysis

Evaluation Date: 23-May-25	Job ID: 71021
Facility Name: Tooheys	Constituent: Chromium
Conducted By: KDP	Concentration Units: µg/L

Sampling Point ID:	BH1	BH2	BH7	BH8	BH9	BH10
--------------------	-----	-----	-----	-----	-----	------

Sampling Event	Sampling Date	CHROMIUM CONCENTRATION (µg/L)					
1	1-Jul-14	0.5	0.5	0.5	0.5	0.5	0.5
2	1-Oct-15	0.5	0.5	0.5	0.5	0.5	0.5
3	1-Jan-16	0.5	0.5	0.5	0.5	0.5	0.5
4	1-Feb-17	0.5	0.5	0.5	0.5	0.5	0.5
5	1-Mar-17	0.5	0.5	0.5	0.5	0.5	0.5
6	1-Aug-17	0.5	0.5	0.5	0.5	0.5	0.5
7	1-Nov-17	0.5	0.5	0.5	0.5	0.5	0.5
8	1-Aug-18	0.5	0.5	0.5	0.5	0.5	0.5
9	1-Nov-18	0.5	0.5	0.5	0.5	1	0.5
10	1-Aug-19	0.5	0.5	0.5	0.5	0.5	0.5
11	1-Nov-19	0.5	0.5	0.5	0.5	0.5	0.5
12	1-May-20	0.5	0.5	0.5	0.5	0.5	0.5
13	1-Nov-20	0.5	0.5	0.5	0.5	0.5	0.5
14	1-May-21	0.5	0.5	0.5	0.5	0.5	0.5
15	1-Nov-21	0.5	0.5	0.5	0.5	0.5	0.5
16	1-May-22	0.5	0.5	0.5	0.5	0.5	0.5
17	1-Nov-22	0.5	0.5	0.5	0.5	0.5	0.5
18	1-May-23	0.5	0.5	0.5	0.5	0.5	0.5
19	24-Nov-23	0.5	0.5	0.5	0.5	0.5	1
20	24-May-24	0.5	0.5	0.5	0.5	0.5	0.5
21	10-Dec-24	0.5	0.5	0.5	0.5	0.5	0.5
22	16-May-25	0.5	0.5	0.5	0.5	0.5	0.5
23							
24							
25							

Coefficient of Variation:	0.00	0.00	0.00	0.00	0.20	0.20
Mann-Kendall Statistic (S):	0	0	0	0	-5	15
Confidence Factor:	48.9%	48.9%	48.9%	48.9%	54.4%	65.2%
Concentration Trend:	Stable	Stable	Stable	Stable	Stable	No Trend



Notes:

- At least four independent sampling events per well are required for calculating the trend. Methodology is valid for 4 to 40 samples.
- Confidence in Trend = Confidence (in percent) that constituent concentration is increasing (S>0) or decreasing (S<0): >95% = Increasing or Decreasing; ≥ 90% = Probably Increasing or Probably Decreasing; < 90% and S>0 = No Trend; < 90%, S≤0, and COV ≥ 1 = No Trend; < 90% and COV < 1 = Stable.
- Methodology based on "MAROS: A Decision Support System for Optimizing Monitoring Plans", J.J. Aziz, M. Ling, H.S. Rifai, C.J. Newell, and J.R. Gonzales, *Ground Water*, 41(3):355-367, 2003.

Result less than laboratory PQL. Half the PQL adopted as concentration

DISCLAIMER: The GSI Mann-Kendall Toolkit is available "as is". Considerable care has been exercised in preparing this software product; however, no party, including without limitation GSI Environmental Inc., makes any representation or warranty regarding the accuracy, correctness, or completeness of the information contained herein, and no such party shall be liable for any direct, indirect, consequential, incidental or other damages resulting from the use of this product or the information contained herein. Information in this publication is subject to change without notice. GSI Environmental Inc., disclaims any responsibility or obligation to update the information contained herein.

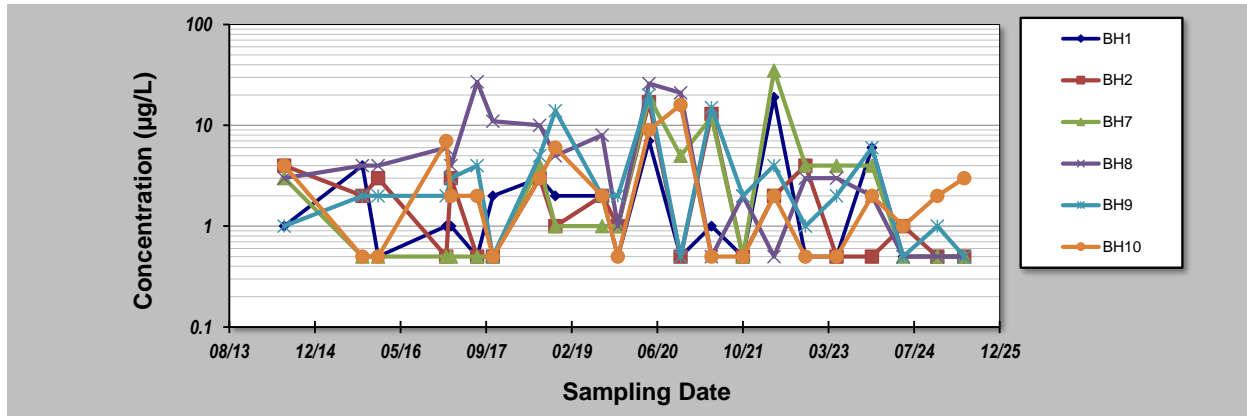
GSI MANN-KENDALL TOOLKIT for Constituent Trend Analysis

Evaluation Date: 23-May-25	Job ID: 71021
Facility Name: Tooheys	Constituent: Chromium
Conducted By: KDP	Concentration Units: µg/L

Sampling Point ID:	BH1	BH2	BH7	BH8	BH9	BH10
--------------------	------------	------------	------------	------------	------------	-------------

Sampling Event	Sampling Date	CHROMIUM CONCENTRATION (µg/L)					
		BH1	BH2	BH7	BH8	BH9	BH10
1	1-Jul-14	1	4	3	3	1	4
2	1-Oct-15	4	2	0.5	4	2	0.5
3	1-Jan-16	0.5	3	0.5	4	2	0.5
4	1-Feb-17	1	0.5	0.5	6	2	7
5	1-Mar-17	1	3	0.5	4	3	2
6	1-Aug-17	0.5	0.5	0.5	27	4	2
7	1-Nov-17	2	0.5	0.5	11	0.5	0.5
8	1-Aug-18	3	3	4	10	5	3
9	1-Nov-18	2	1	1	5	14	6
10	1-Aug-19	2	2	1	8	2	2
11	1-Nov-19	0.5	1	1	1	2	0.5
12	1-May-20	7	17	19	26	20	9
13	1-Nov-20	0.5	0.5	5	21	0.5	16
14	1-May-21	1	13	12	0.5	15	0.5
15	1-Nov-21	0.5	0.5	0.5	2	2	0.5
16	1-May-22	19	2	35	0.5	4	2
17	1-Nov-22	0.5	4	4	3	1	0.5
18	1-May-23	0.5	0.5	4	3	2	0.5
19	24-Nov-23	6	0.5	4	2	6	2
20	24-May-24	0.5	1	0.5	0.5	0.5	1
21	10-Dec-24	0.5	0.5	0.5	0.5	1	2
22	16-May-25	0.5	0.5	0.5	0.5	0.5	3
23							
24							
25							

Coefficient of Variation:	1.68	1.52	1.83	1.24	1.29	1.26
Mann-Kendall Statistic (S):	-37	-51	37	-86	-18	-5
Confidence Factor:	84.3%	92.0%	84.3%	99.3%	68.2%	54.4%
Concentration Trend:	No Trend	Prob. Decreasing	No Trend	Decreasing	No Trend	No Trend



Notes:

- At least four independent sampling events per well are required for calculating the trend. Methodology is valid for 4 to 40 samples.
- Confidence in Trend = Confidence (in percent) that constituent concentration is increasing (S>0) or decreasing (S<0): >95% = Increasing or Decreasing; ≥ 90% = Probably Increasing or Probably Decreasing; < 90% and S>0 = No Trend; < 90%, S≤0, and COV ≥ 1 = No Trend; < 90% and COV < 1 = Stable.
- Methodology based on "MAROS: A Decision Support System for Optimizing Monitoring Plans", J.J. Aziz, M. Ling, H.S. Rifai, C.J. Newell, and J.R. Gonzales, *Ground Water*, 41(3):355-367, 2003.

Result less than laboratory PQL. Half the PQL adopted as concentration

DISCLAIMER: The GSI Mann-Kendall Toolkit is available "as is". Considerable care has been exercised in preparing this software product; however, no party, including without limitation GSI Environmental Inc., makes any representation or warranty regarding the accuracy, correctness, or completeness of the information contained herein, and no such party shall be liable for any direct, indirect, consequential, incidental or other damages resulting from the use of this product or the information contained herein. Information in this publication is subject to change without notice. GSI Environmental Inc., disclaims any responsibility or obligation to update the information contained herein.

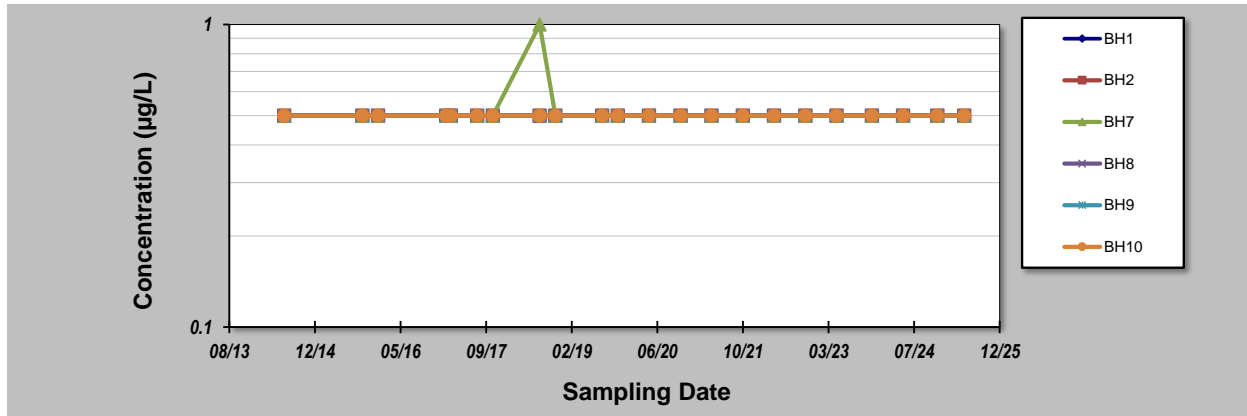
GSI MANN-KENDALL TOOLKIT for Constituent Trend Analysis

Evaluation Date: 23-May-25	Job ID: 71021
Facility Name: Tooheys	Constituent: Lead
Conducted By: KDP	Concentration Units: µg/L

Sampling Point ID:	BH1	BH2	BH7	BH8	BH9	BH10
--------------------	-----	-----	-----	-----	-----	------

Sampling Event	Sampling Date	LEAD CONCENTRATION (µg/L)					
		BH1	BH2	BH7	BH8	BH9	BH10
1	1-Jul-14	0.5	0.5	0.5	0.5	0.5	0.5
2	1-Oct-15	0.5	0.5	0.5	0.5	0.5	0.5
3	1-Jan-16	0.5	0.5	0.5	0.5	0.5	0.5
4	1-Feb-17	0.5	0.5	0.5	0.5	0.5	0.5
5	1-Mar-17	0.5	0.5	0.5	0.5	0.5	0.5
6	1-Aug-17	0.5	0.5	0.5	0.5	0.5	0.5
7	1-Nov-17	0.5	0.5	0.5	0.5	0.5	0.5
8	1-Aug-18	0.5	0.5	1	0.5	0.5	0.5
9	1-Nov-18	0.5	0.5	0.5	0.5	0.5	0.5
10	1-Aug-19	0.5	0.5	0.5	0.5	0.5	0.5
11	1-Nov-19	0.5	0.5	0.5	0.5	0.5	0.5
12	1-May-20	0.5	0.5	0.5	0.5	0.5	0.5
13	1-Nov-20	0.5	0.5	0.5	0.5	0.5	0.5
14	1-May-21	0.5	0.5	0.5	0.5	0.5	0.5
15	1-Nov-21	0.5	0.5	0.5	0.5	0.5	0.5
16	1-May-22	0.5	0.5	0.5	0.5	0.5	0.5
17	1-Nov-22	0.5	0.5	0.5	0.5	0.5	0.5
18	1-May-23	0.5	0.5	0.5	0.5	0.5	0.5
19	24-Nov-23	0.5	0.5	0.5	0.5	0.5	0.5
20	24-May-24	0.5	0.5	0.5	0.5	0.5	0.5
21	10-Dec-24	0.5	0.5	0.5	0.5	0.5	0.5
22	16-May-25	0.5	0.5	0.5	0.5	0.5	0.5
23							
24							
25							

Coefficient of Variation:	0.00	0.00	0.20	0.00	0.00	0.00
Mann-Kendall Statistic (S):	0	0	-7	0	0	0
Confidence Factor:	48.9%	48.9%	56.6%	48.9%	48.9%	48.9%
Concentration Trend:	Stable	Stable	Stable	Stable	Stable	Stable



Notes:

- At least four independent sampling events per well are required for calculating the trend. Methodology is valid for 4 to 40 samples.
- Confidence in Trend = Confidence (in percent) that constituent concentration is increasing (S>0) or decreasing (S<0): >95% = Increasing or Decreasing; ≥ 90% = Probably Increasing or Probably Decreasing; < 90% and S>0 = No Trend; < 90%, S≤0, and COV ≥ 1 = No Trend; < 90% and COV < 1 = Stable.
- Methodology based on "MAROS: A Decision Support System for Optimizing Monitoring Plans", J.J. Aziz, M. Ling, H.S. Rifai, C.J. Newell, and J.R. Gonzales, *Ground Water*, 41(3):355-367, 2003.

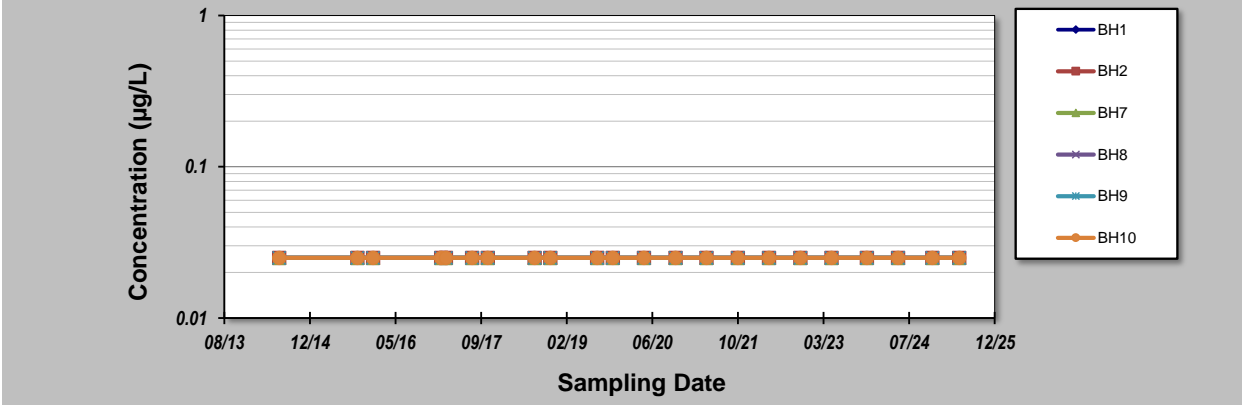
Result less than laboratory PQL. Half the PQL adopted as concentration

DISCLAIMER: The GSI Mann-Kendall Toolkit is available "as is". Considerable care has been exercised in preparing this software product; however, no party, including without limitation GSI Environmental Inc., makes any representation or warranty regarding the accuracy, correctness, or completeness of the information contained herein, and no such party shall be liable for any direct, indirect, consequential, incidental or other damages resulting from the use of this product or the information contained herein. Information in this publication is subject to change without notice. GSI Environmental Inc., disclaims any responsibility or obligation to update the information contained herein.

GSI MANN-KENDALL TOOLKIT for Constituent Trend Analysis

Evaluation Date: 23-May-25	Job ID: 71021
Facility Name: Tooheys	Constituent: Mercury
Conducted By: KDP	Concentration Units: µg/L

Sampling Point ID:	BH1	BH2	BH7	BH8	BH9	BH10	
Sampling Event	MERCURY CONCENTRATION (µg/L)						
1	1-Jul-14	0.025	0.025	0.025	0.025	0.025	0.025
2	1-Oct-15	0.025	0.025	0.025	0.025	0.025	0.025
3	1-Jan-16	0.025	0.025	0.025	0.025	0.025	0.025
4	1-Feb-17	0.025	0.025	0.025	0.025	0.025	0.025
5	1-Mar-17	0.025	0.025	0.025	0.025	0.025	0.025
6	1-Aug-17	0.025	0.025	0.025	0.025	0.025	0.025
7	1-Nov-17	0.025	0.025	0.025	0.025	0.025	0.025
8	1-Aug-18	0.025	0.025	0.025	0.025	0.025	0.025
9	1-Nov-18	0.025	0.025	0.025	0.025	0.025	0.025
10	1-Aug-19	0.025	0.025	0.025	0.025	0.025	0.025
11	1-Nov-19	0.025	0.025	0.025	0.025	0.025	0.025
12	1-May-20	0.025	0.025	0.025	0.025	0.025	0.025
13	1-Nov-20	0.025	0.025	0.025	0.025	0.025	0.025
14	1-May-21	0.025	0.025	0.025	0.025	0.025	0.025
15	1-Nov-21	0.025	0.025	0.025	0.025	0.025	0.025
16	1-May-22	0.025	0.025	0.025	0.025	0.025	0.025
17	1-Nov-22	0.025	0.025	0.025	0.025	0.025	0.025
18	1-May-23	0.025	0.025	0.025	0.025	0.025	0.025
19	24-Nov-23	0.025	0.025	0.025	0.025	0.025	0.025
20	24-May-24	0.025	0.025	0.025	0.025	0.025	0.025
21	10-Dec-24	0.025	0.025	0.025	0.025	0.025	0.025
22	16-May-25	0.025	0.025	0.025	0.025	0.025	0.025
23							
24							
25							
Coefficient of Variation:	0.00	0.00	0.00	0.00	0.00	0.00	0.00
Mann-Kendall Statistic (S):	0	0	0	0	0	0	0
Confidence Factor:	48.9%	48.9%	48.9%	48.9%	48.9%	48.9%	48.9%
Concentration Trend:	Stable	Stable	Stable	Stable	Stable	Stable	Stable



Notes:

- At least four independent sampling events per well are required for calculating the trend. *Methodology is valid for 4 to 40 samples.*
- Confidence in Trend = Confidence (in percent) that constituent concentration is increasing (S>0) or decreasing (S<0): >95% = Increasing or Decreasing; ≥ 90% = Probably Increasing or Probably Decreasing; < 90% and S>0 = No Trend; < 90%, S≤0, and COV ≥ 1 = No Trend; < 90% and COV < 1 = Stable.
- Methodology based on "MAROS: A Decision Support System for Optimizing Monitoring Plans", J.J. Aziz, M. Ling, H.S. Rifai, C.J. Newell, and J.R. Gonzales, *Ground Water*, 41(3):355-367, 2003.

Result less than laboratory PQL. Half the PQL adopted as concentration

DISCLAIMER: The GSI Mann-Kendall Toolkit is available "as is". Considerable care has been exercised in preparing this software product; however, no party, including without limitation GSI Environmental Inc., makes any representation or warranty regarding the accuracy, correctness, or completeness of the information contained herein, and no such party shall be liable for any direct, indirect, consequential, incidental or other damages resulting from the use of this product or the information contained herein. Information in this publication is subject to change without notice. GSI Environmental Inc., disclaims any responsibility or obligation to update the information contained herein.

GSI Environmental Inc., www.gsi-net.com

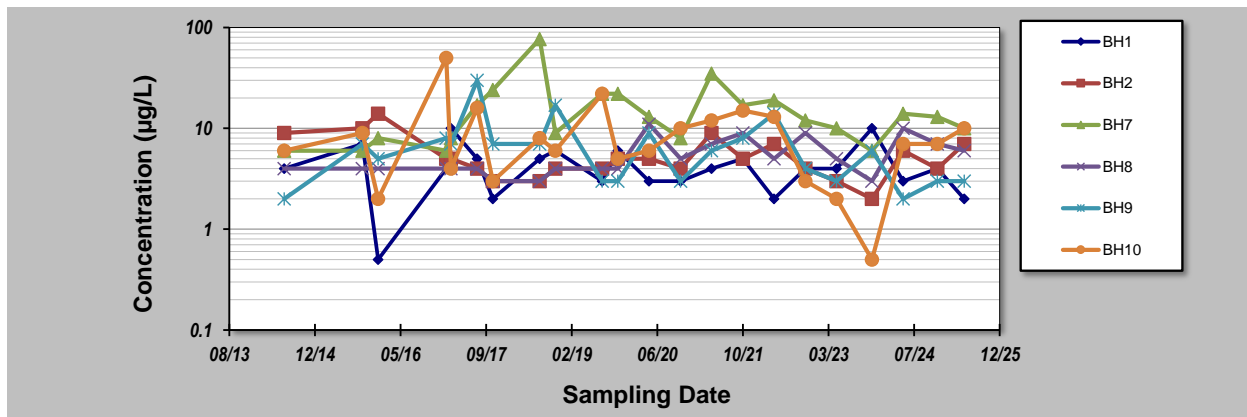
GSI MANN-KENDALL TOOLKIT for Constituent Trend Analysis

Evaluation Date: 23-May-25	Job ID: 71021
Facility Name: Tooheys	Constituent: Nickel
Conducted By: KDP	Concentration Units: µg/L

Sampling Point ID:	BH1	BH2	BH7	BH8	BH9	BH10
--------------------	------------	------------	------------	------------	------------	-------------

Sampling Event	Sampling Date	NICKEL CONCENTRATION (µg/L)					
		BH1	BH2	BH7	BH8	BH9	BH10
1	1-Jul-14	4	9	6	4	2	6
2	1-Oct-15	7	10	6	4	7	9
3	1-Jan-16	0.5	14	8	4	5	2
4	1-Feb-17	4	5	6	4	8	50
5	1-Mar-17	10	5	8	4	7	4
6	1-Aug-17	5	4	17	4	30	16
7	1-Nov-17	2	3	24	3	7	3
8	1-Aug-18	5	3	77	3	7	8
9	1-Nov-18	6	4	9	4	17	6
10	1-Aug-19	3	4	22	4	3	22
11	1-Nov-19	6	5	22	4	3	5
12	1-May-20	3	5	13	11	9	6
13	1-Nov-20	3	4	8	5	3	10
14	1-May-21	4	9	35	7	6	12
15	1-Nov-21	5	5	17	9	8	15
16	1-May-22	2	7	19	5	14	13
17	1-Nov-22	4	4	12	9	4	3
18	1-May-23	4	3	10	5	3	2
19	24-Nov-23	10	2	6	3	6	0.5
20	24-May-24	3	6	14	10	2	7
21	10-Dec-24	4	4	13	7	3	7
22	16-May-25	2	7	10	6	3	10
23							
24							
25							

Coefficient of Variation:	0.54	0.51	0.94	0.44	0.89	1.06
Mann-Kendall Statistic (S):	-28	-37	30	87	-49	-8
Confidence Factor:	77.5%	84.3%	79.1%	99.3%	91.1%	57.7%
Concentration Trend:	Stable	Stable	No Trend	Increasing	Prob. Decreasing	No Trend



Notes:

- At least four independent sampling events per well are required for calculating the trend. Methodology is valid for 4 to 40 samples.
- Confidence in Trend = Confidence (in percent) that constituent concentration is increasing (S>0) or decreasing (S<0): >95% = Increasing or Decreasing; ≥ 90% = Probably Increasing or Probably Decreasing; < 90% and S>0 = No Trend; < 90%, S≤0, and COV ≥ 1 = No Trend; < 90% and COV < 1 = Stable.
- Methodology based on "MAROS: A Decision Support System for Optimizing Monitoring Plans", J.J. Aziz, M. Ling, H.S. Rifai, C.J. Newell, and J.R. Gonzales, *Ground Water*, 41(3):355-367, 2003.

Result less than laboratory PQL. Half the PQL adopted as concentration

DISCLAIMER: The GSI Mann-Kendall Toolkit is available "as is". Considerable care has been exercised in preparing this software product; however, no party, including without limitation GSI Environmental Inc., makes any representation or warranty regarding the accuracy, correctness, or completeness of the information contained herein, and no such party shall be liable for any direct, indirect, consequential, incidental or other damages resulting from the use of this product or the information contained herein. Information in this publication is subject to change without notice. GSI Environmental Inc., disclaims any responsibility or obligation to update the information contained herein.

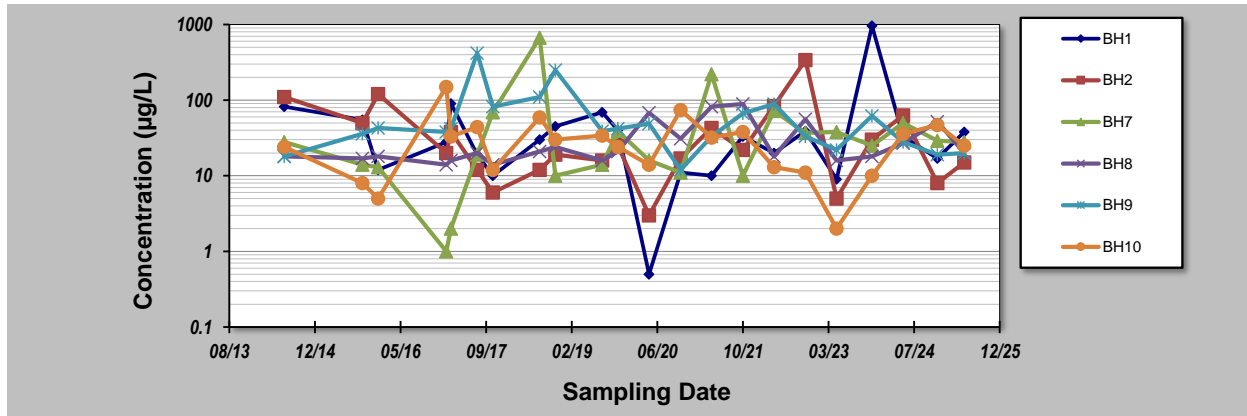
GSI MANN-KENDALL TOOLKIT for Constituent Trend Analysis

Evaluation Date: 23-May-25	Job ID: 71021
Facility Name: Tooheys	Constituent: Zinc
Conducted By: KDP	Concentration Units: µg/L

Sampling Point ID:	BH1	BH2	BH7	BH8	BH9	BH10
--------------------	------------	------------	------------	------------	------------	-------------

Sampling Event	Sampling Date	ZINC CONCENTRATION (µg/L)					
1	1-Jul-14	82	110	28	18	18	24
2	1-Oct-15	55	50	14	17	36	8
3	1-Jan-16	12	120	13	18	43	5
4	1-Feb-17	28	20	1	14	38	150
5	1-Mar-17	90	38	2	16	42	33
6	1-Aug-17	19	12	19	20	420	44
7	1-Nov-17	10	6	69	14	82	12
8	1-Aug-18	30	12	670	21	110	59
9	1-Nov-18	45	19	10	24	250	30
10	1-Aug-19	69	16	14	16	39	34
11	1-Nov-19	40	25	39	21	42	24
12	1-May-20	0.5	3	16	68	49	14
13	1-Nov-20	11	17	11	31	12	74
14	1-May-21	10	43	220	82	33	32
15	1-Nov-21	33	22	10	89	67	38
16	1-May-22	20	84	72	18	89	13
17	1-Nov-22	39	340	37	56	33	11
18	1-May-23	9	5	38	16	22	2
19	24-Nov-23	960	30	25	18	62	10
20	24-May-24	33	63	50	27	28	36
21	10-Dec-24	17	8	29	52	19	47
22	16-May-25	38	15	28	20	20	25
23							
24							
25							

Coefficient of Variation:	2.65	1.52	2.22	0.75	1.31	0.96
Mann-Kendall Statistic (S):	-25	-22	50	75	-43	-8
Confidence Factor:	74.8%	72.1%	91.6%	98.2%	88.0%	57.7%
Concentration Trend:	No Trend	No Trend	Prob. Increasing	Increasing	No Trend	Stable



Notes:

- At least four independent sampling events per well are required for calculating the trend. Methodology is valid for 4 to 40 samples.
- Confidence in Trend = Confidence (in percent) that constituent concentration is increasing (S>0) or decreasing (S<0): >95% = Increasing or Decreasing; ≥ 90% = Probably Increasing or Probably Decreasing; < 90% and S>0 = No Trend; < 90%, S≤0, and COV ≥ 1 = No Trend; < 90% and COV < 1 = Stable.
- Methodology based on "MAROS: A Decision Support System for Optimizing Monitoring Plans", J.J. Aziz, M. Ling, H.S. Rifai, C.J. Newell, and J.R. Gonzales, *Ground Water*, 41(3):355-367, 2003.

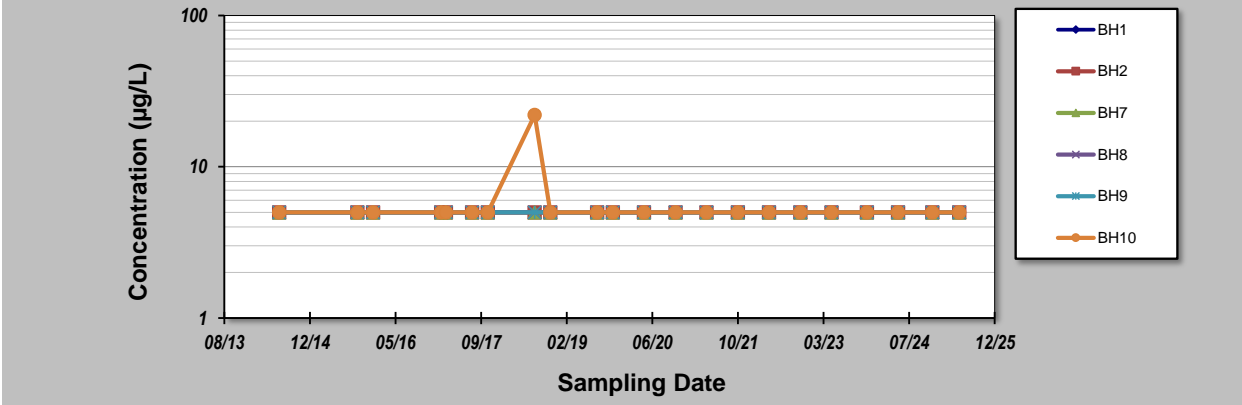
Result less than laboratory PQL. Half the PQL adopted as concentration

DISCLAIMER: The GSI Mann-Kendall Toolkit is available "as is". Considerable care has been exercised in preparing this software product; however, no party, including without limitation GSI Environmental Inc., makes any representation or warranty regarding the accuracy, correctness, or completeness of the information contained herein, and no such party shall be liable for any direct, indirect, consequential, incidental or other damages resulting from the use of this product or the information contained herein. Information in this publication is subject to change without notice. GSI Environmental Inc., disclaims any responsibility or obligation to update the information contained herein.

GSI MANN-KENDALL TOOLKIT for Constituent Trend Analysis

Evaluation Date: 23-May-25	Job ID: 71021
Facility Name: Tooheys	Constituent: C6-C9
Conducted By: KDP	Concentration Units: µg/L

Sampling Point ID:	BH1	BH2	BH7	BH8	BH9	BH10	
Sampling Event	C6-C9 CONCENTRATION (µg/L)						
1	5	5	5	5	5	5	
2	5	5	5	5	5	5	
3	5	5	5	5	5	5	
4	5	5	5	5	5	5	
5	5	5	5	5	5	5	
6	5	5	5	5	5	5	
7	5	5	5	5	5	5	
8	5	5	5	5	5	22	
9	5	5	5	5	5	5	
10	5	5	5	5	5	5	
11	5	5	5	5	5	5	
12	5	5	5	5	5	5	
13	5	5	5	5	5	5	
14	5	5	5	5	5	5	
15	5	5	5	5	5	5	
16	5	5	5	5	5	5	
17	5	5	5	5	5	5	
18	5	5	5	5	5	5	
19	5	5	5	5	5	5	
20	5	5	5	5	5	5	
21	5	5	5	5	5	5	
22	5	5	5	5	5	5	
23							
24							
25							
Coefficient of Variation:	0.00	0.00	0.00	0.00	0.00	0.63	
Mann-Kendall Statistic (S):	0	0	0	0	0	-7	
Confidence Factor:	48.9%	48.9%	48.9%	48.9%	48.9%	56.6%	
Concentration Trend:	Stable	Stable	Stable	Stable	Stable	Stable	



- Notes:**
- At least four independent sampling events per well are required for calculating the trend. Methodology is valid for 4 to 40 samples.
 - Confidence in Trend = Confidence (in percent) that constituent concentration is increasing (S>0) or decreasing (S<0): >95% = Increasing or Decreasing; ≥ 90% = Probably Increasing or Probably Decreasing; < 90% and S>0 = No Trend; < 90%, S≤0, and COV ≥ 1 = No Trend; < 90% and COV < 1 = Stable.
 - Methodology based on "MAROS: A Decision Support System for Optimizing Monitoring Plans", J.J. Aziz, M. Ling, H.S. Rifai, C.J. Newell, and J.R. Gonzales, *Ground Water*, 41(3):355-367, 2003.
- Result less than laboratory PQL. Half the PQL adopted as concentration

DISCLAIMER: The GSI Mann-Kendall Toolkit is available "as is". Considerable care has been exercised in preparing this software product; however, no party, including without limitation GSI Environmental Inc., makes any representation or warranty regarding the accuracy, correctness, or completeness of the information contained herein, and no such party shall be liable for any direct, indirect, consequential, incidental or other damages resulting from the use of this product or the information contained herein. Information in this publication is subject to change without notice. GSI Environmental Inc., disclaims any responsibility or obligation to update the information contained herein.

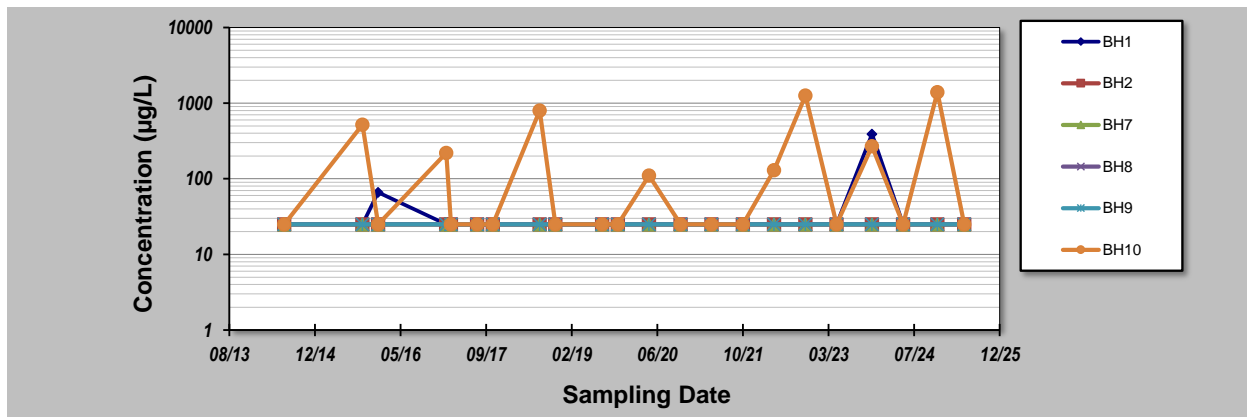
GSI Environmental Inc., www.gsi-net.com

GSI MANN-KENDALL TOOLKIT for Constituent Trend Analysis

Evaluation Date: 23-May-25	Job ID: 71021
Facility Name: Tooheys	Constituent: C10-C36
Conducted By: KDP	Concentration Units: µg/L

Sampling Point ID:	BH1	BH2	BH7	BH8	BH9	BH10
--------------------	------------	------------	------------	------------	------------	-------------

Sampling Event	Sampling Date	C10-C36 CONCENTRATION (µg/L)					
1	1-Jul-14	25	25	25	25	25	25
2	1-Oct-15	25	25	25	25	25	520
3	1-Jan-16	66	25	25	25	25	25
4	1-Feb-17	25	25	25	25	25	220
5	1-Mar-17	25	25	25	25	25	25
6	1-Aug-17	25	25	25	25	25	25
7	1-Nov-17	25	25	25	25	25	25
8	1-Aug-18	25	25	25	25	25	800
9	1-Nov-18	25	25	25	25	25	25
10	1-Aug-19	25	25	25	25	25	25
11	1-Nov-19	25	25	25	25	25	25
12	1-May-20	25	25	25	25	25	110
13	1-Nov-20	25	25	25	25	25	25
14	1-May-21	25	25	25	25	25	25
15	1-Nov-21	25	25	25	25	25	25
16	1-May-22	25	25	25	25	25	130
17	1-Nov-22	25	25	25	25	25	1258
18	1-May-23	25	25	25	25	25	25
19	24-Nov-23	390	25	25	25	25	270
20	24-May-24	25	25	25	25	25	25
21	10-Dec-24	25	25	25	25	25	1400
22	16-May-25	25	25	25	25	25	25
23							
24							
25							
Coefficient of Variation:		1.79	0.00	0.00	0.00	0.00	1.76
Mann-Kendall Statistic (S):		-1	0	0	0	0	22
Confidence Factor:		50.0%	48.9%	48.9%	48.9%	48.9%	72.1%
Concentration Trend:		No Trend	Stable	Stable	Stable	Stable	No Trend



Notes:

- At least four independent sampling events per well are required for calculating the trend. Methodology is valid for 4 to 40 samples.
- Confidence in Trend = Confidence (in percent) that constituent concentration is increasing (S>0) or decreasing (S<0): >95% = Increasing or Decreasing; ≥ 90% = Probably Increasing or Probably Decreasing; < 90% and S>0 = No Trend; < 90%, S≤0, and COV ≥ 1 = No Trend; < 90% and COV < 1 = Stable.
- Methodology based on "MAROS: A Decision Support System for Optimizing Monitoring Plans", J.J. Aziz, M. Ling, H.S. Rifai, C.J. Newell, and J.R. Gonzales, *Ground Water*, 41(3):355-367, 2003.

Result less than laboratory PQL. Half the PQL adopted as concentration

DISCLAIMER: The GSI Mann-Kendall Toolkit is available "as is". Considerable care has been exercised in preparing this software product; however, no party, including without limitation GSI Environmental Inc., makes any representation or warranty regarding the accuracy, correctness, or completeness of the information contained herein, and no such party shall be liable for any direct, indirect, consequential, incidental or other damages resulting from the use of this product or the information contained herein. Information in this publication is subject to change without notice. GSI Environmental Inc., disclaims any responsibility or obligation to update the information contained herein.